

FLEX™ SYSTEM

For installation on top of any flooring surface

Updated
02.12.2021



CONNECTRAC.

A brand of **legrand**

HOW WE CAN HELP

Online

Build your own Flex raceway system using our innovative web tool on the Connectrac website!

Click around and play in this online experience while learning the basics of how Flex works.

connectrac.com/build-your-own

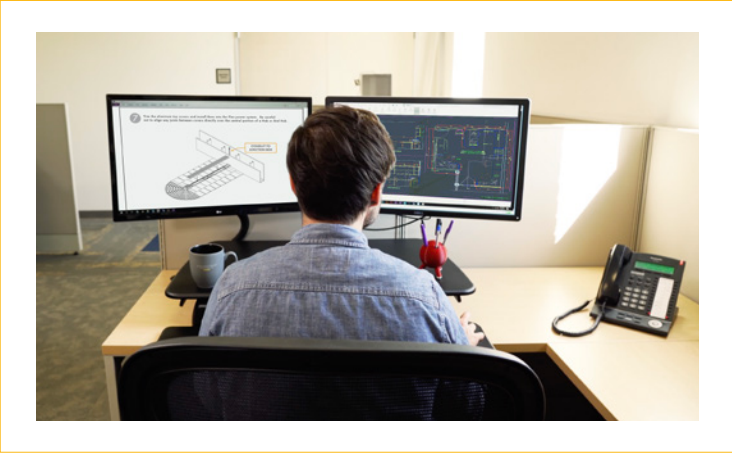


Design Team Services

Connectrac® believes in providing exceptional customer service by offering unique resources like our Design Team.

These industry specialists are available to help you specify the best Flex solution for your next project.

connectrac.com/design-services



General Info & Questions

Contact us any time! | [877.480.5637](tel:877.480.5637) | info@connectrac.com | connectrac.com

TABLE OF CONTENTS

What is Flex?	Pg 4
How it Works	Pg 6
Get Started	Pg 8
Flex Data Capacity	Pg 9

FLEX SYSTEM

For installation on top of any flooring surface



HUDDLE

MEET

WORK

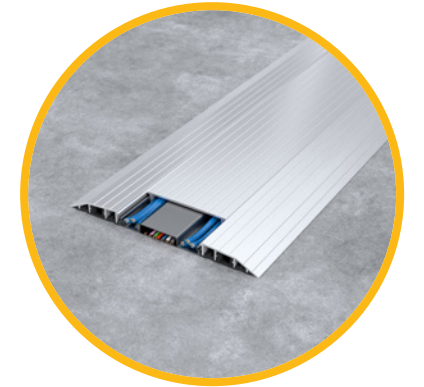
**Silver finish shown here*

Connectrac® Flex is...

A floor-based power and data distribution system that allows users to quickly add connectivity or change power locations in a snap.

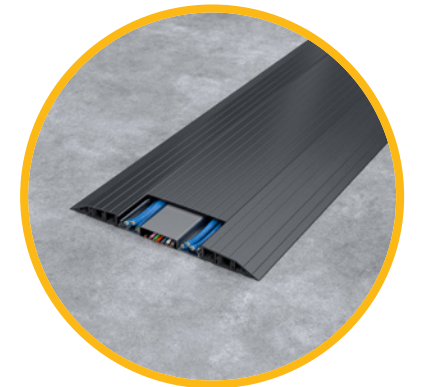
Any Space. Any Building. Any Time.™

Available in these finishes:



Silver (SV)

Standard finish



Dark Gray (DG)

Optional finish

HOW IT WORKS

Explore the graphic to learn more about the Flex system for installation on top of any flooring surface.

A
Entrance Fitting
Quick connector powers entire raceway & allows data to enter

B
Raceway

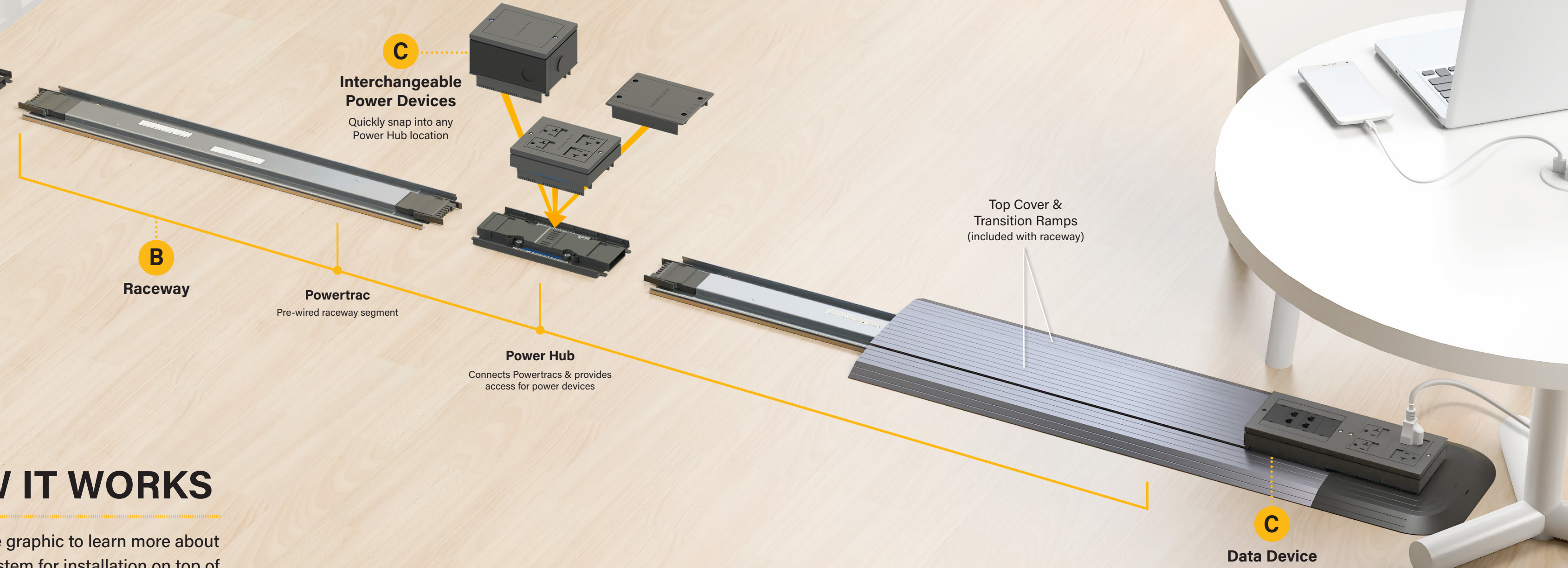
Powertrac
Pre-wired raceway segment

C
Interchangeable Power Devices
Quickly snap into any Power Hub location

Power Hub
Connects Powertracs & provides access for power devices

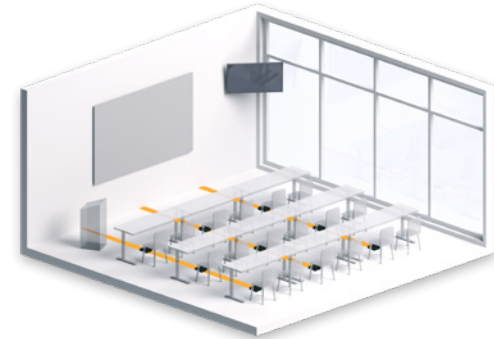
Top Cover & Transition Ramps
(included with raceway)

C
Data Device
Snaps into the raceway to provide data connectivity

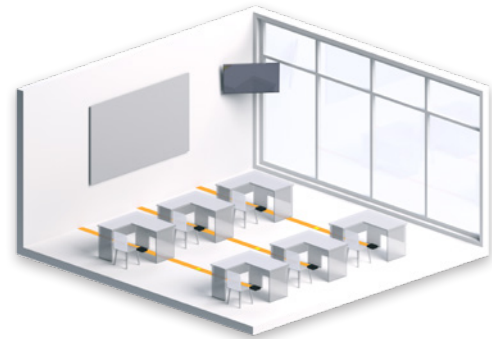


Plan Flex Raceway System

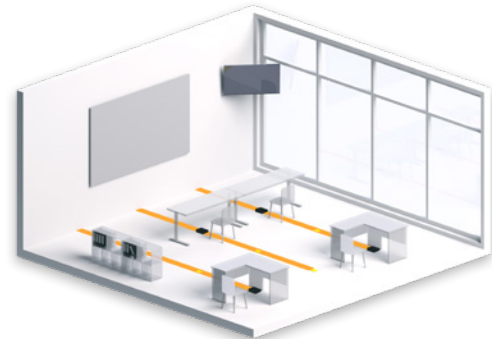
TIP: Visualize how your space might adapt and evolve over time.



What is the current use of this space?



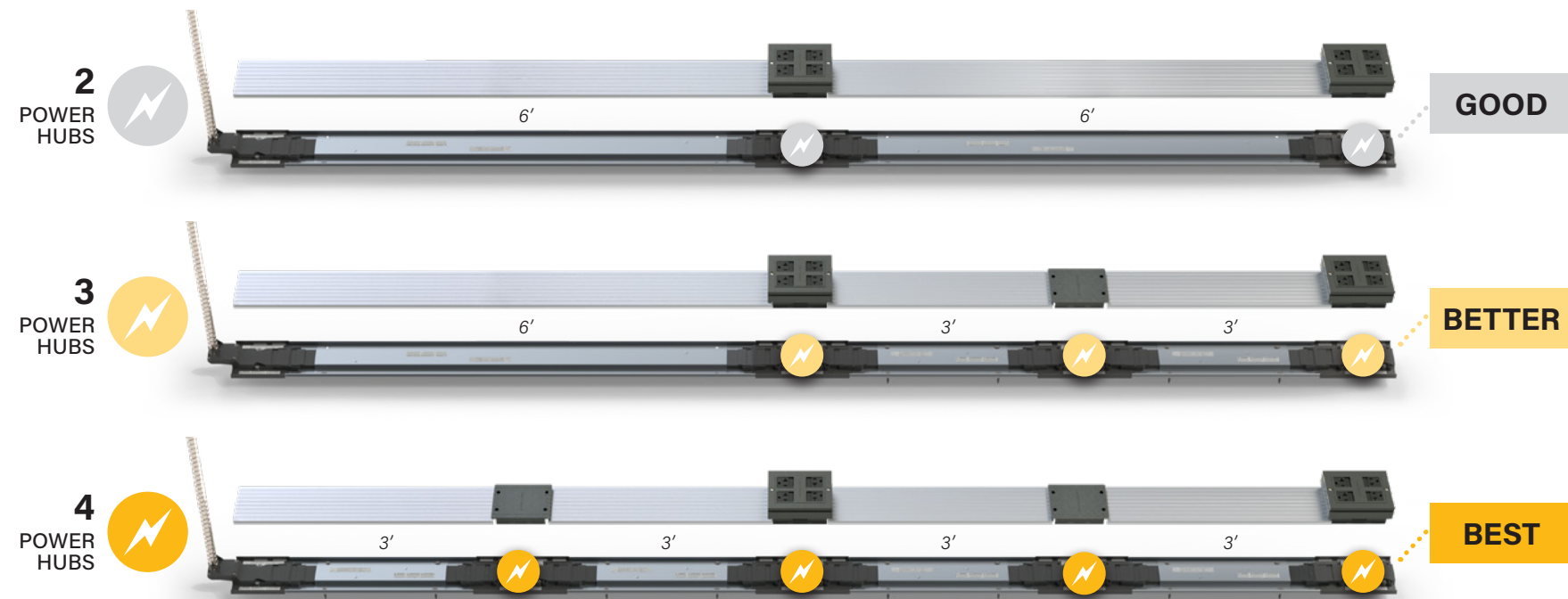
What else might it be used for in the future?



How might furniture be rearranged?

Optimize Your Raceway

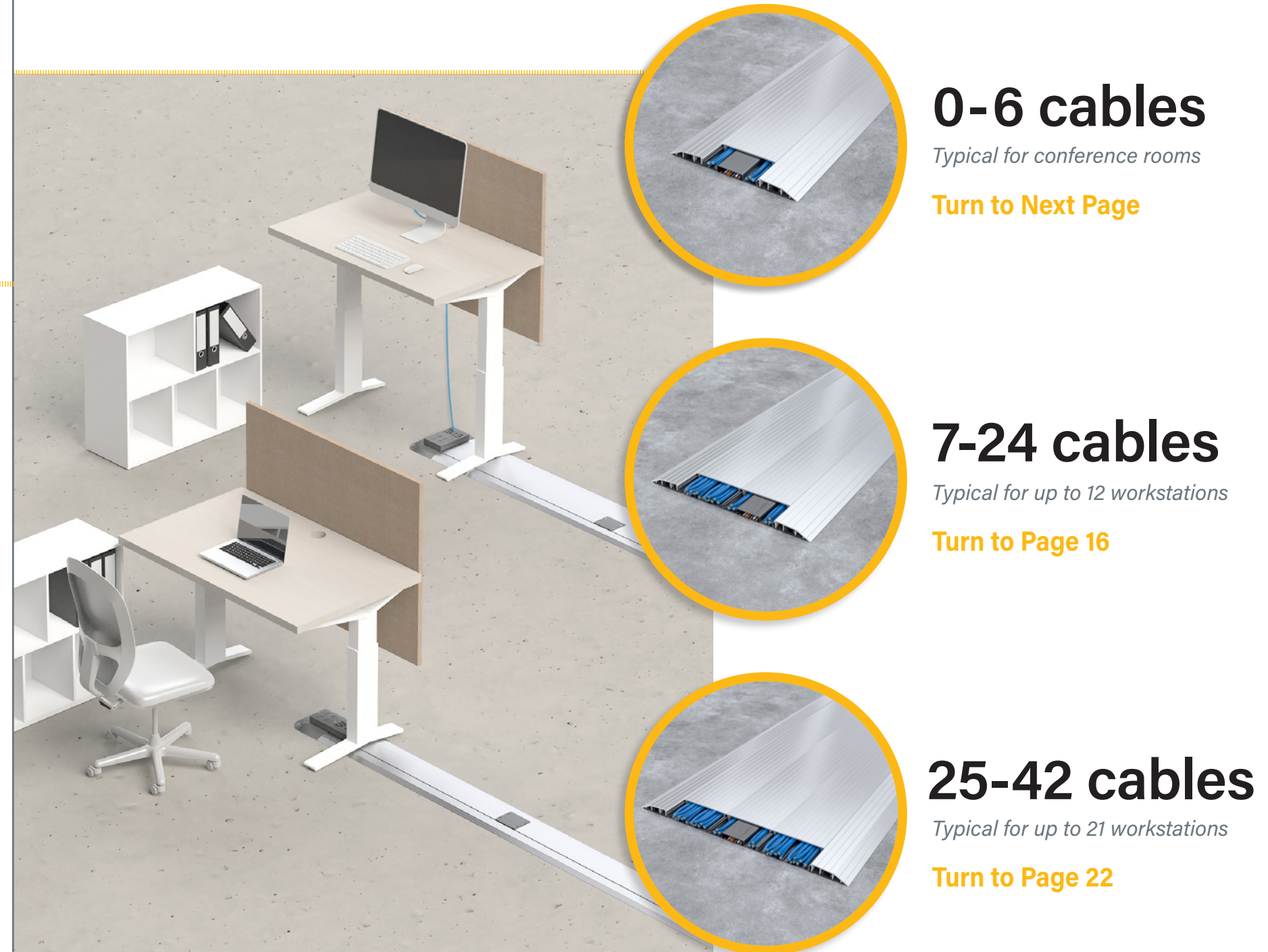
Increase your system's adaptability by adding more points of power access.



⚡ Power Hubs = access points for power devices

TIP: For greater flexibility at minimal cost, add more Power Hubs and connect shorter Powertracs.

How much data do you need?



0-6 cables

Typical for conference rooms

Turn to Next Page

7-24 cables

Typical for up to 12 workstations

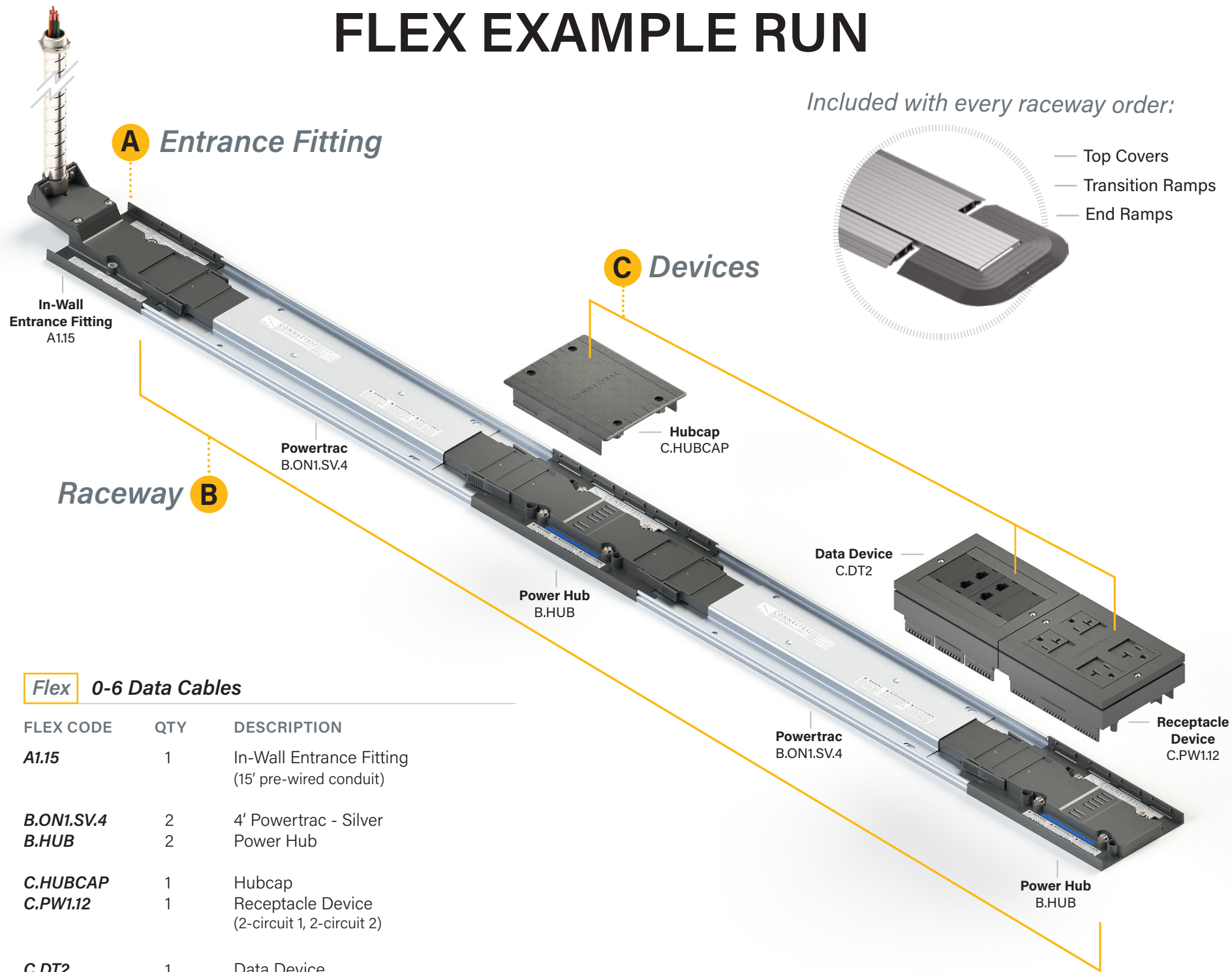
Turn to Page 16

25-42 cables

Typical for up to 21 workstations

Turn to Page 22

FLEX EXAMPLE RUN

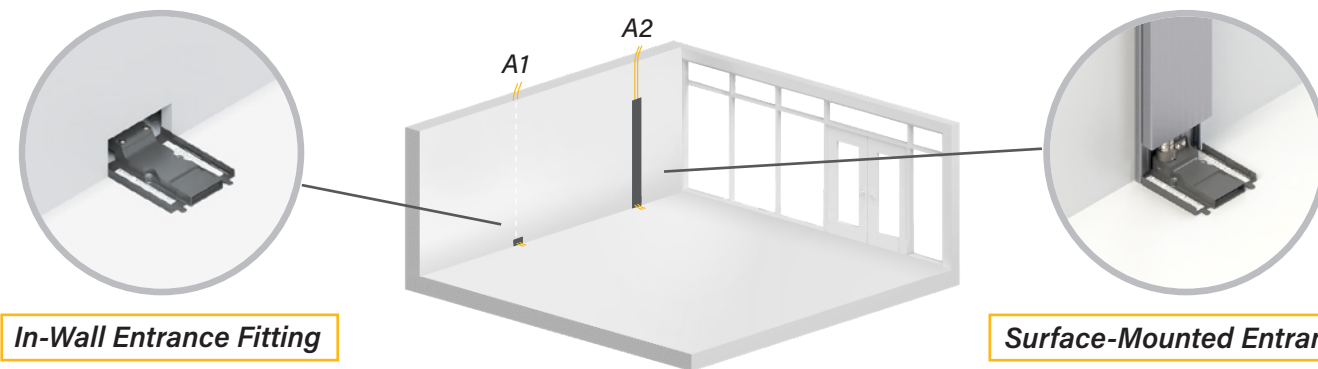


Flex 0-6 Data Cables

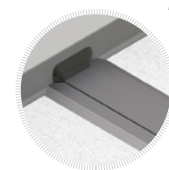
FLEX CODE	QTY	DESCRIPTION
A1.15	1	In-Wall Entrance Fitting (15' pre-wired conduit)
B.ON1.SV.4	2	4' Powertrac - Silver
B.HUB	2	Power Hub
C.HUBCAP	1	Hubcap
C.PW1.12	1	Receptacle Device (2-circuit 1, 2-circuit 2)
C.DT2	1	Data Device

A Entrance Fitting

Choose how your Flex raceways start at the wall.

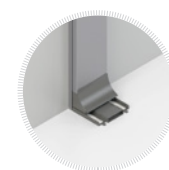


FLEX CODE	DESCRIPTION
A1.15	In-Wall Entrance Fitting Use when cabling is running <i>INSIDE</i> the wall: 15' pre-wired conduit
A1.30	30' pre-wired conduit



Base Trim included

FLEX CODE	DESCRIPTION
A2.3	Surface-Mounted Entrance Fitting Use when cabling is running <i>OUTSIDE</i> the wall: 3' pre-wired conduit, 2' Walltrac
A2.15	15' pre-wired conduit, 12' Walltrac
A2.30	30' pre-wired conduit, 12' Walltrac



Transition accessories included

TIP: Use A2.3 to connect to existing wall outlet boxes.



B Raceway

Continue to build your raceways by connecting Powertracs and Power Hubs.

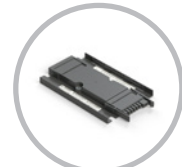
Powertracs



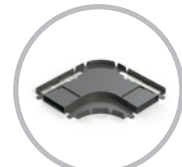
Powertrac



Top Covers & Ramps included



Powertrac Extender



Powertrac Corner

FLEX CODE

B.ON1.__

DESCRIPTION

Powertrac

Pre-wired raceway segments available in multiple finishes and standard lengths:

Silver Standard finish	Dark Gray Optional finish	Powertrac Length
B.ON1.SV.2	B.ON1.DG.2	2 ft
B.ON1.SV.3	B.ON1.DG.3	3 ft
B.ON1.SV.4	B.ON1.DG.4	4 ft
B.ON1.SV.5	B.ON1.DG.5	5 ft
B.ON1.SV.6	B.ON1.DG.6	6 ft

B.ON1.EXT

Powertrac Extender

Adds 6" to any of our standard Powertrac lengths

B.ON1.90

Powertrac Corner

Allows raceway to make a 90° turn

Power Hub

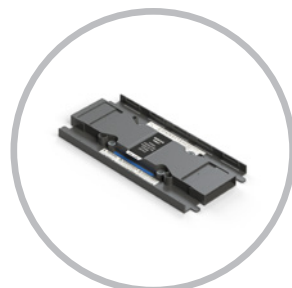
FLEX CODE

B.HUB

DESCRIPTION

Power Hub

Connects Powertracs & provides access for power devices



Power Hub

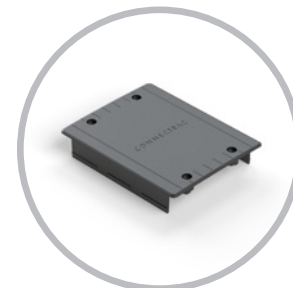
TIP: For greater flexibility at minimal cost, add more Power Hubs and connect shorter Powertracs.

C Devices

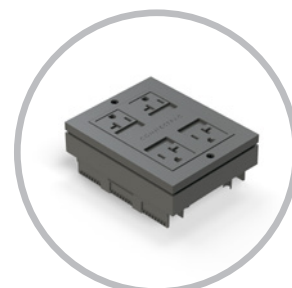
Equip your Flex raceway system with power & data devices.

Power Devices

Choose which devices (if any) you want to snap into your Power Hubs.



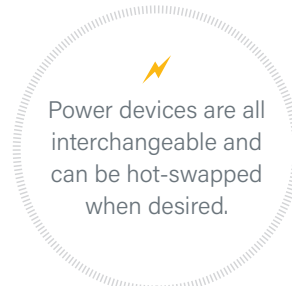
Hubcap



Receptacle Device



Hardwire Device



FLEX CODE

C.HUBCAP

DESCRIPTION

Hubcap

Creates a walkable surface and makes power easily accessible for future needs

C.PW1.__

Receptacle Device

Quad device available in various 4-circuit options:

C.PW1.11	All circuit 1
C.PW1.22	All circuit 2
C.PW1.33	All circuit 3
C.PW1.44	All circuit 4
C.PW1.12*	2-circuit 1, 2-circuit 2
C.PW1.34*	2-circuit 3, 2-circuit 4
C.PW1.14*	2-circuit 1, 2-circuit 4

*Controlled devices available (see Technical Guide for more details)

C.PW2.4

Hardwire Device

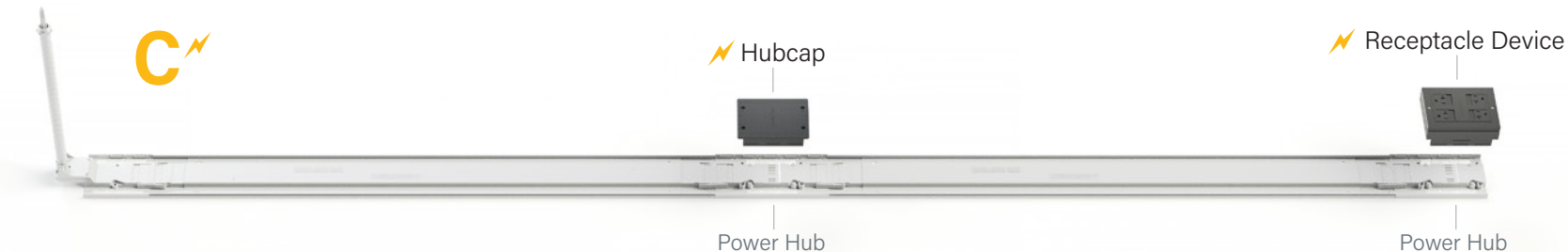
4-circuit monument that connects to most furniture base feeds

B



*Powertrac measurements are based on the on-center distance between the Entrance Fitting and/or Power Hubs.

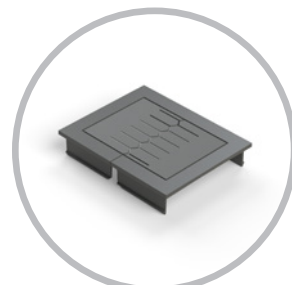
C



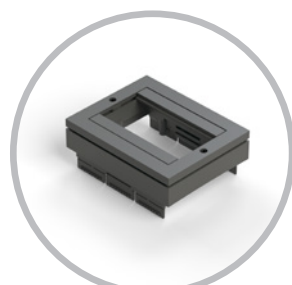
C Devices

Equip your Flex raceway system with power & data devices.

Data Devices These devices go anywhere on the raceway.



Grommet



Data Device

Data devices easily snap next to any power device.

FLEX CODE	DESCRIPTION
C.DT1	Grommet Allows cables to enter/exit raceway
C.DT2	Data Device Fits up to 8 low-voltage keystone modules



Optional Accessories

Enhance your raceways with these additional options.

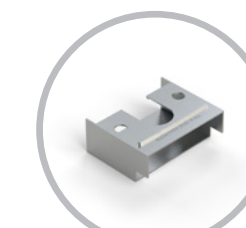


Accessories

FLEX CODE	DESCRIPTION
VWM	Vertical Wire Manager Attaches to any power or data device to manage cabling
RIF	Rough-In Frame Installed before drywall to provide a rough opening for cabling
C.HUBCAP	Extra Hubcap Creates a walkable surface and makes power easily accessible for future needs



Vertical Wire Manager



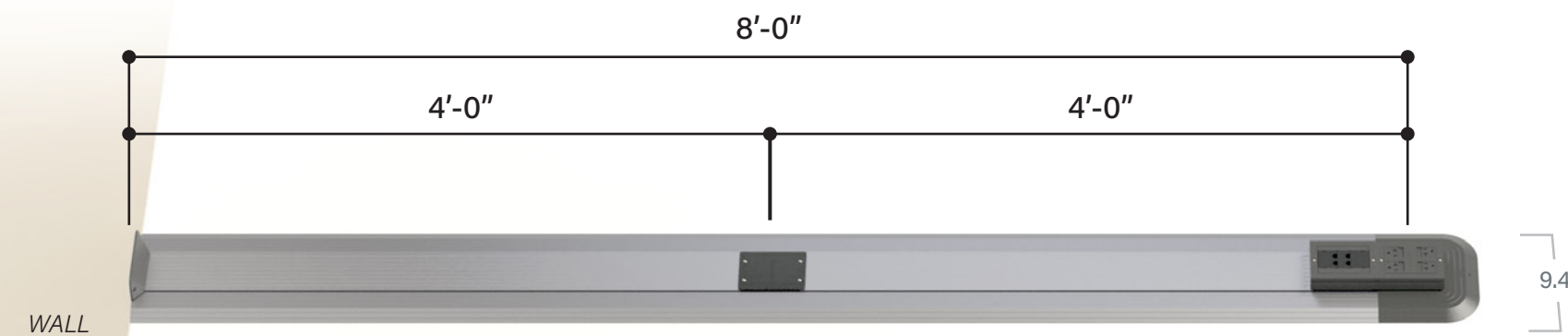
Rough-In Frame



Extra Hubcap

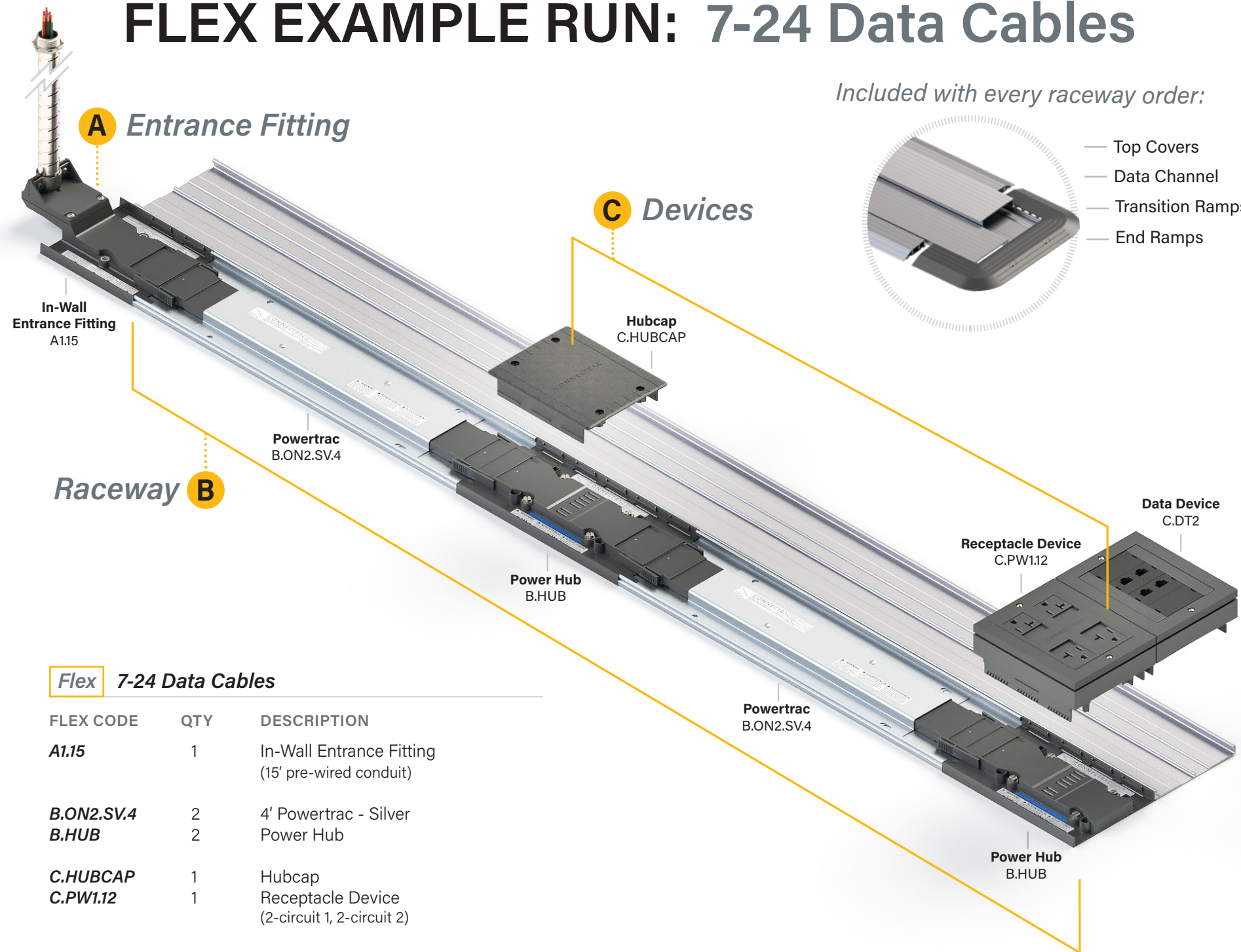
Complete Raceway

Shown with Top Covers, Transition Ramps, and End Ramps installed.



*Silver finish shown here

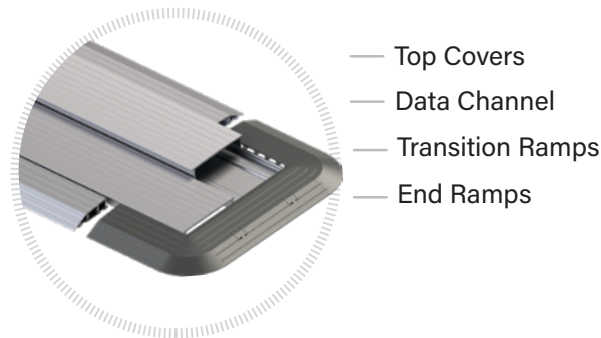
FLEX EXAMPLE RUN: 7-24 Data Cables



Flex 7-24 Data Cables

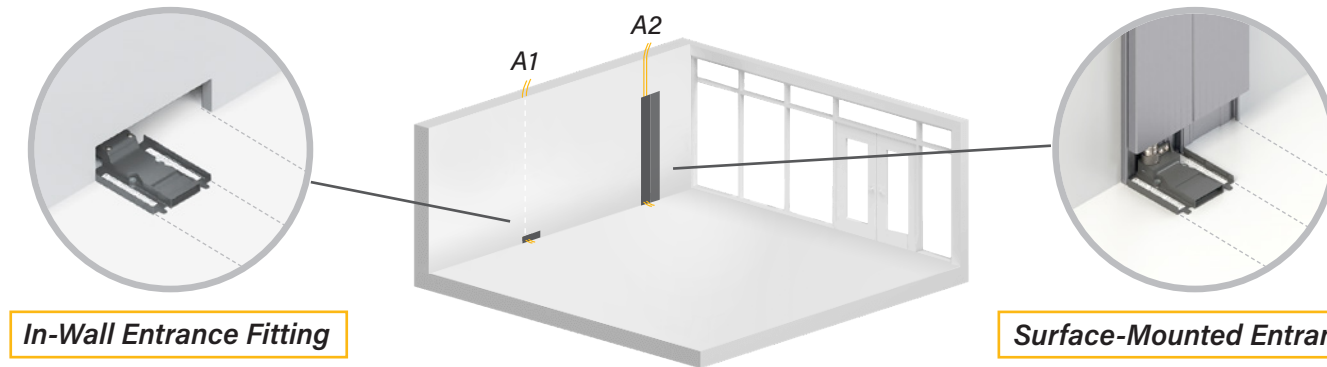
FLEX CODE	QTY	DESCRIPTION
A1.15	1	In-Wall Entrance Fitting (15' pre-wired conduit)
B.ON2.SV.4	2	4' Powertrac - Silver
B.HUB	2	Power Hub
C.HUBCAP	1	Hubcap
C.PW1.12	1	Receptacle Device (2-circuit 1, 2-circuit 2)
C.DT2	1	Data Device

Included with every raceway order:

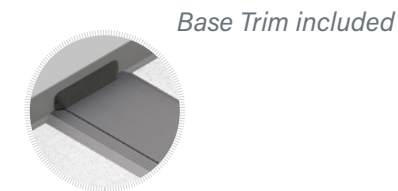


A Entrance Fitting

Choose how your Flex raceways start at the wall.



FLEX CODE	DESCRIPTION
A1.15	In-Wall Entrance Fitting Use when cabling is running <i>INSIDE</i> the wall: 15' pre-wired conduit
A1.30	30' pre-wired conduit



FLEX CODE	DESCRIPTION
A2.3	Surface-Mounted Entrance Fitting Use when cabling is running <i>OUTSIDE</i> the wall: 3' pre-wired conduit, 2' Walltrac
A2.15	15' pre-wired conduit, 12' Walltrac
A2.30	30' pre-wired conduit, 12' Walltrac



TIP: Use A2.3 to connect to existing wall outlet boxes.



B Raceway

Continue to build your raceways by connecting Powertracs and Power Hubs.

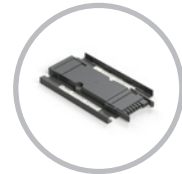
Powertracs



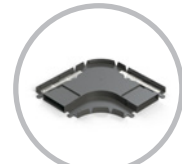
Powertrac



Top Covers, Data Channel & Ramps included



Powertrac Extender



Powertrac Corner

FLEX CODE

B.ON2.__

DESCRIPTION

Powertrac

Pre-wired raceway segments available in multiple finishes and standard lengths:

Silver Standard finish	Dark Gray Optional finish	Powertrac Length
B.ON2.SV.2	B.ON2.DG.2	2 ft
B.ON2.SV.3	B.ON2.DG.3	3 ft
B.ON2.SV.4	B.ON2.DG.4	4 ft
B.ON2.SV.5	B.ON2.DG.5	5 ft
B.ON2.SV.6	B.ON2.DG.6	6 ft

B.ON2.EXT

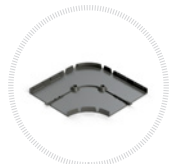
Powertrac Extender

Adds 6" to any of our standard Powertrac lengths

B.ON2.90

Powertrac Corner

Allows raceway to make a 90° turn



Datatrac Corner included

Power Hub

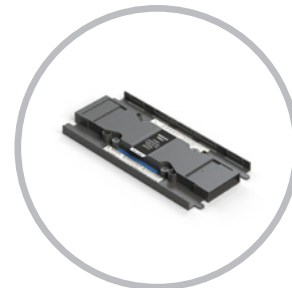
FLEX CODE

B.HUB

DESCRIPTION

Power Hub

Connects Powertracs & provides access for power devices



Power Hub

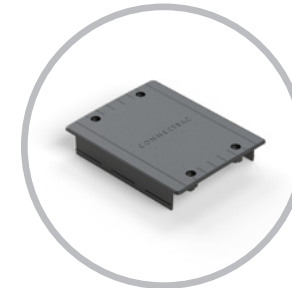
TIP: For greater flexibility at minimal cost, add more Power Hubs and connect shorter Powertracs.

C Devices

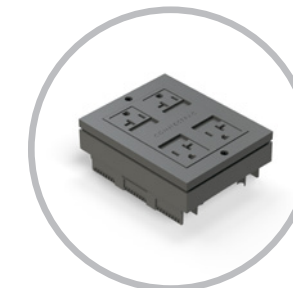
Equip your Flex raceway system with power & data devices.

Power Devices

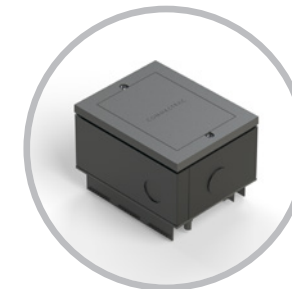
Choose which devices (if any) you want to snap into your Power Hubs.



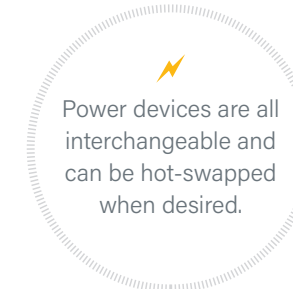
Hubcap



Receptacle Device



Hardwire Device



FLEX CODE

C.HUBCAP

DESCRIPTION

Hubcap

Creates a walkable surface and makes power easily accessible for future needs

C.PW1.__

Receptacle Device

Quad device available in various 4-circuit options:

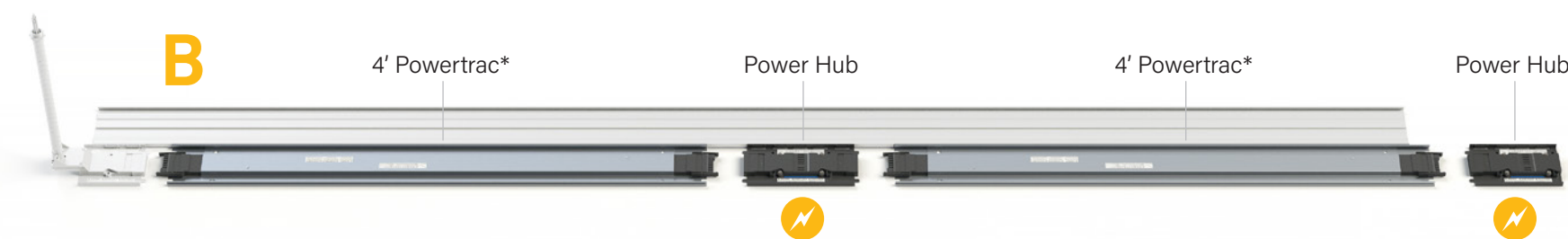
C.PW1.11	All circuit 1
C.PW1.22	All circuit 2
C.PW1.33	All circuit 3
C.PW1.44	All circuit 4
C.PW1.12*	2-circuit 1, 2-circuit 2
C.PW1.34*	2-circuit 3, 2-circuit 4
C.PW1.14*	2-circuit 1, 2-circuit 4

*Controlled devices available (see Technical Guide for more details)

C.PW2.4

Hardwire Device

4-circuit monument that connects to most furniture base feeds



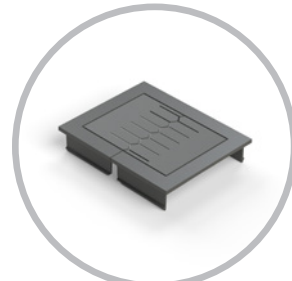
*Powertrac measurements are based on the on-center distance between the Entrance Fitting and/or Power Hubs.



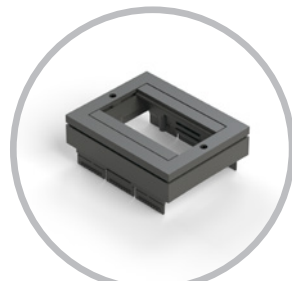
C Devices

Equip your Flex raceway system with power & data devices.

Data Devices These devices go anywhere on the raceway.



Grommet



Data Device

Data Devices easily snap next to any Power Device.

FLEX CODE	DESCRIPTION
C.DT1	Grommet Allows cables to enter/exit raceway
C.DT2	Data Device Fits up to 8 low-voltage keystone modules



Optional Accessories

Enhance your raceways with these additional options.

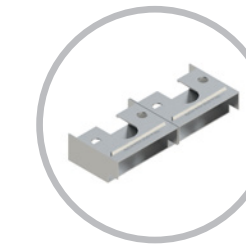


Accessories

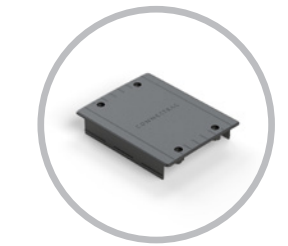
FLEX CODE	DESCRIPTION
VWM	Vertical Wire Manager Attaches to any power or data device to manage cabling
RIF	Rough-In Frame Installed before drywall to provide a rough opening for cabling
C.HUBCAP	Extra Hubcap Creates a walkable surface and makes power easily accessible for future needs



Vertical Wire Manager



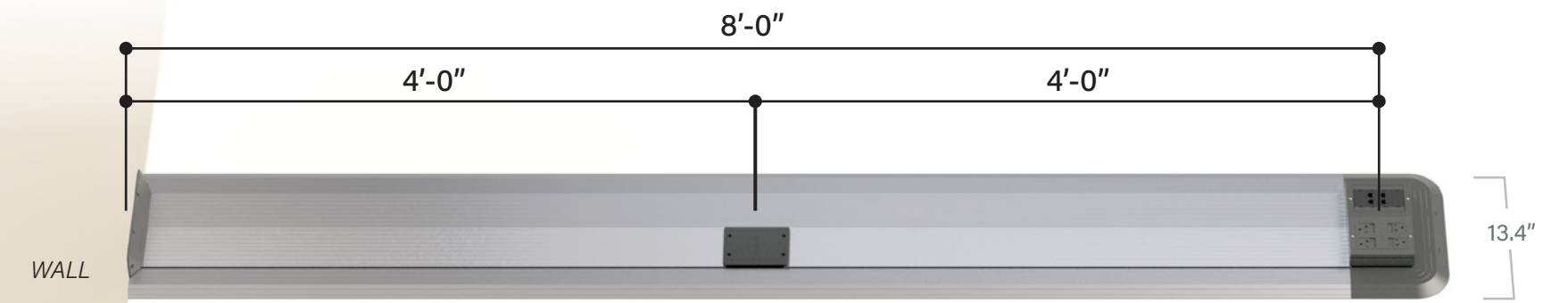
Rough-In Frame



Extra Hubcap

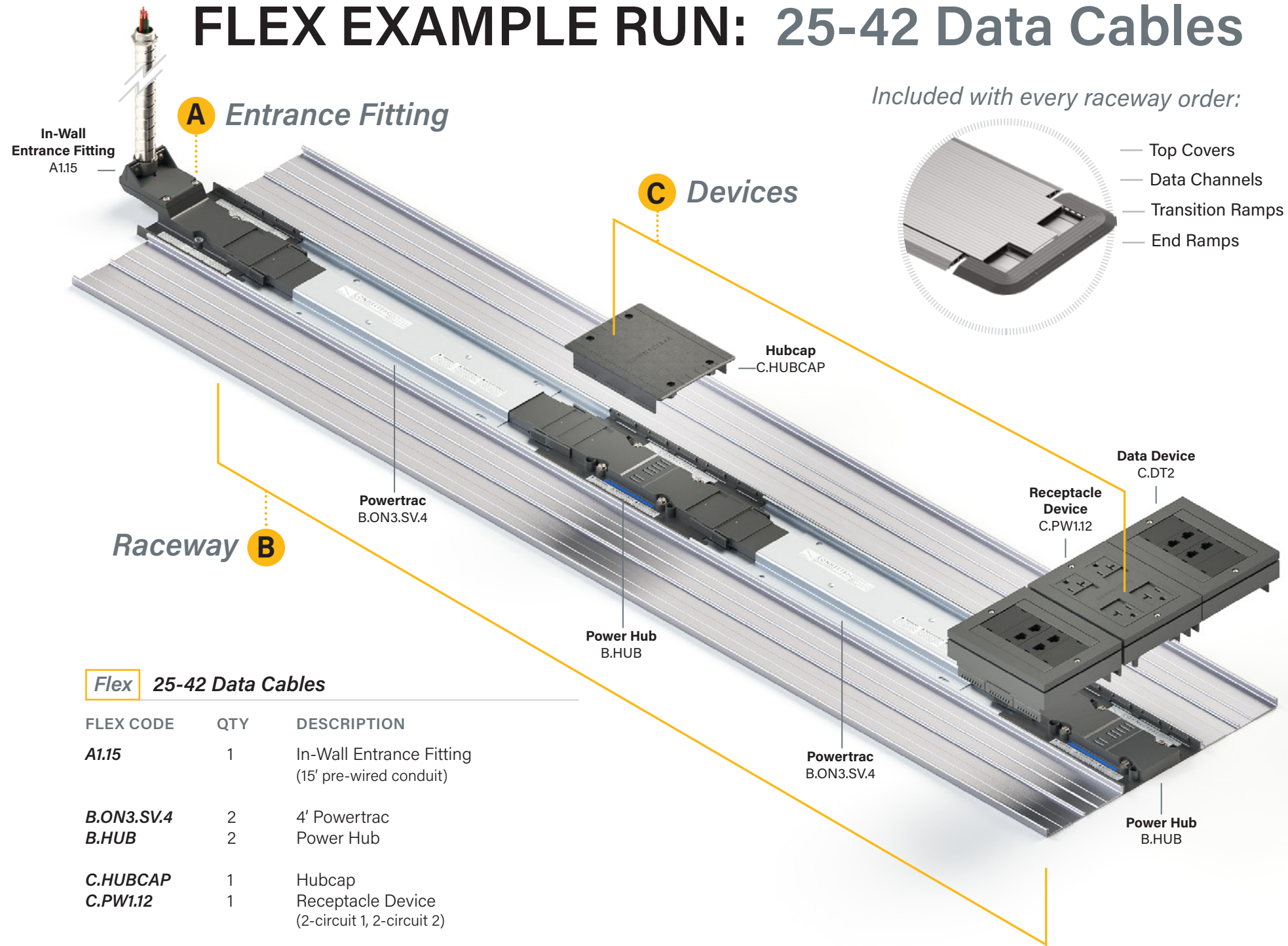
Complete Raceway

Shown with Top Covers, Transition Ramps, and End Ramps installed.



*Silver finish shown here

FLEX EXAMPLE RUN: 25-42 Data Cables

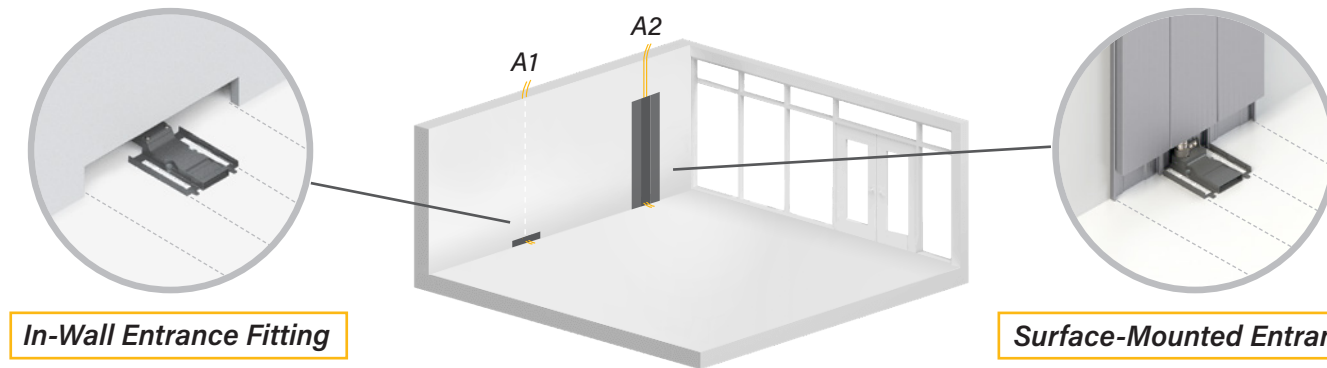


Flex 25-42 Data Cables

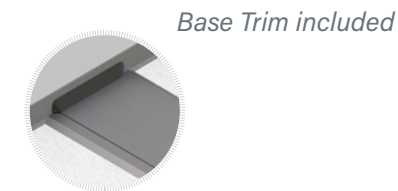
FLEX CODE	QTY	DESCRIPTION
A1.15	1	In-Wall Entrance Fitting (15' pre-wired conduit)
B.ON3.SV.4	2	4' Powertrac
B.HUB	2	Power Hub
C.HUBCAP	1	Hubcap
C.PW1.12	1	Receptacle Device (2-circuit 1, 2-circuit 2)
C.DT2	2	Data Device

A Entrance Fitting

Choose how your Flex raceways start at the wall.



FLEX CODE	DESCRIPTION
A1.	In-Wall Entrance Fitting
	Use when cabling is running <i>INSIDE</i> the wall:
A1.15	15' pre-wired conduit
A1.30	30' pre-wired conduit



FLEX CODE	DESCRIPTION
A2.	Surface-Mounted Entrance Fitting
	Use when cabling is running <i>OUTSIDE</i> the wall:
A2.3	3' pre-wired conduit, 2' Walltrac
A2.15	15' pre-wired conduit, 12' Walltrac
A2.30	30' pre-wired conduit, 12' Walltrac



TIP: Use A2.3 to connect to existing wall outlet boxes.



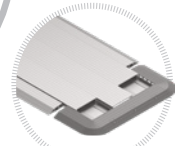
B Raceway

Continue to build your raceways by connecting Powertracs and Power Hubs.

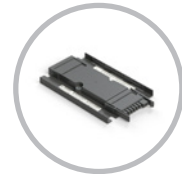
Powertracs



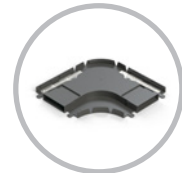
Powertrac



Top Covers, Data Channels & Ramps included



Powertrac Extender



Powertrac Corner

FLEX CODE

B.ON3.__

DESCRIPTION

Powertrac

Pre-wired raceway segments available in multiple finishes and standard lengths:

Silver Standard finish	Dark Gray Optional finish	Powertrac Length
B.ON3.SV.2	B.ON3.DG.2	2 ft
B.ON3.SV.3	B.ON3.DG.3	3 ft
B.ON3.SV.4	B.ON3.DG.4	4 ft
B.ON3.SV.5	B.ON3.DG.5	5 ft
B.ON3.SV.6	B.ON3.DG.6	6 ft

B.ON3.EXT

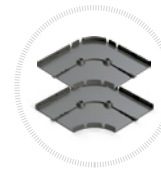
Powertrac Extender

Adds 6" to any of our standard Powertrac lengths

B.ON3.90

Powertrac Corner

Allows raceway to make a 90° turn



Datatrac Corners included

Power Hub

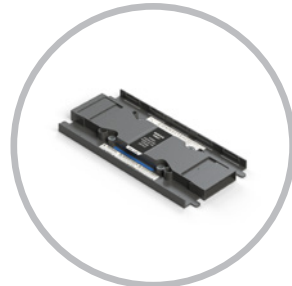
FLEX CODE

B.HUB

DESCRIPTION

Power Hub

Connects Powertracs & provides access for power devices



Power Hub

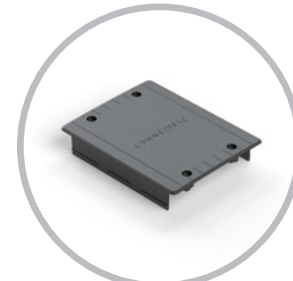
TIP: For greater flexibility at minimal cost, add more Power Hubs and connect shorter Powertracs.

C Devices

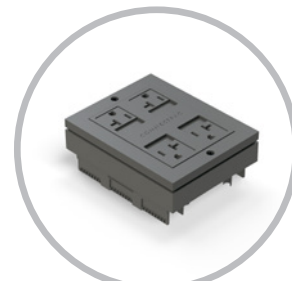
Equip your Flex raceway system with power & data devices.

Power Devices

Choose which devices (if any) you want to snap into your Power Hubs.



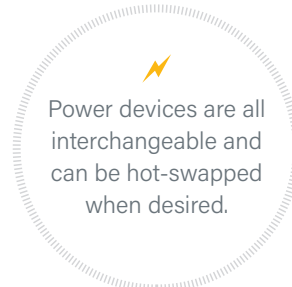
Hubcap



Receptacle Device



Hardwire Device



FLEX CODE

C.HUBCAP

DESCRIPTION

Hubcap

Creates a walkable surface and makes power easily accessible for future needs

C.PW1.__

Receptacle Device

Quad device available in various 4-circuit options:

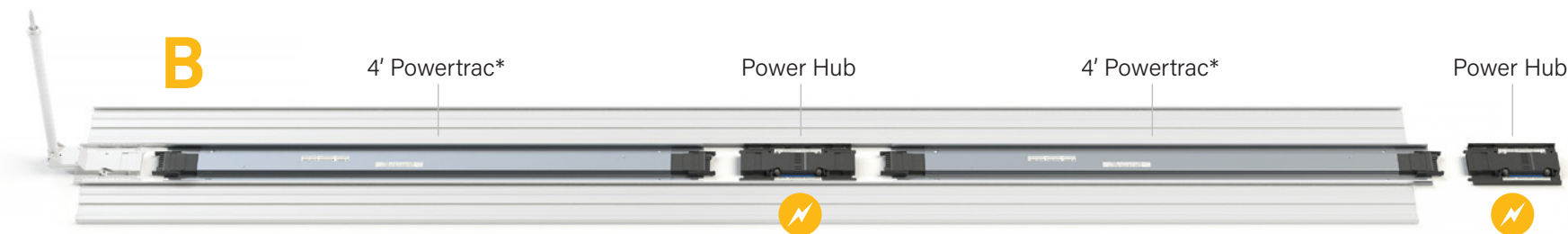
C.PW1.11	All circuit 1
C.PW1.22	All circuit 2
C.PW1.33	All circuit 3
C.PW1.44	All circuit 4
C.PW1.12*	2-circuit 1, 2-circuit 2
C.PW1.34*	2-circuit 3, 2-circuit 4
C.PW1.14*	2-circuit 1, 2-circuit 4

*Controlled devices available (see Technical Guide for more details)

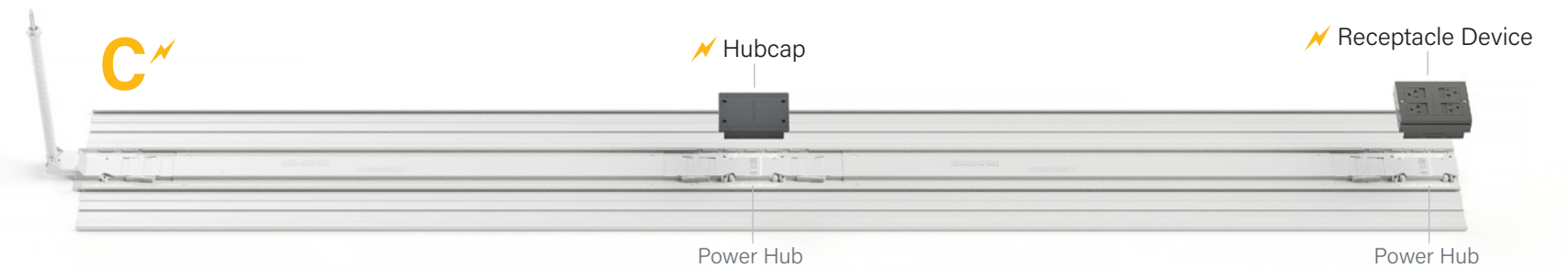
C.PW2.4

Hardwire Device

4-circuit monument that connects to most furniture base feeds



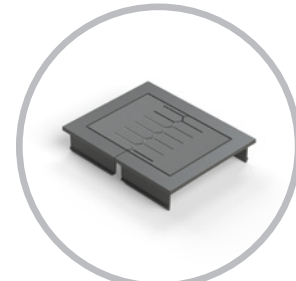
*Powertrac measurements are based on the on-center distance between the Entrance Fitting and/or Power Hubs.



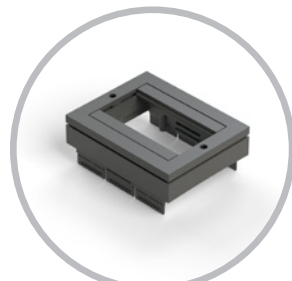
C Devices

Equip your Flex raceway system with power & data devices.

Data Devices These devices go anywhere on the raceway.



Grommet



Data Device

Data devices easily snap next to any power device.

FLEX CODE	DESCRIPTION
C.DT1	Grommet Allows cables to enter/exit raceway
C.DT2	Data Device Fits up to 8 low-voltage keystone modules



Optional Accessories

Enhance your raceways with these additional options.

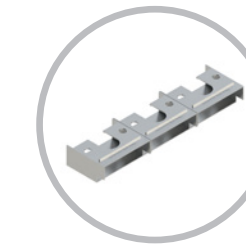


Accessories

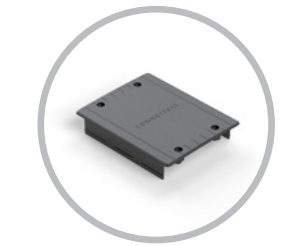
FLEX CODE	DESCRIPTION
VWM	Vertical Wire Manager Attaches to any power or data device to manage cabling
RIF	Rough-In Frame Installed before drywall to provide a rough opening for cabling
C.HUBCAP	Extra Hubcap Creates a walkable surface and makes power easily accessible for future needs



Vertical Wire Manager



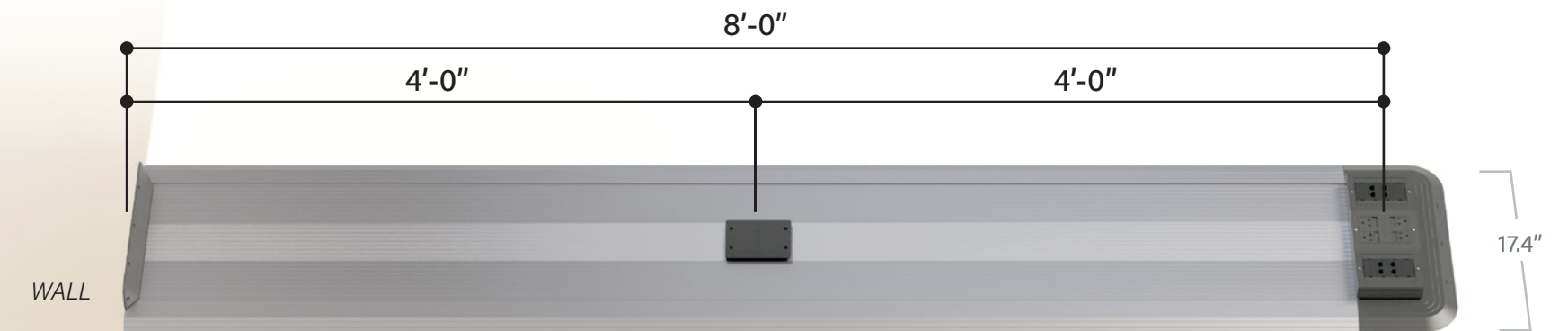
Rough-In Frame



Extra Hubcap

Complete Raceway

Shown with Top Covers, Transition Ramps, and End Ramps installed.



*Silver finish shown here