

FLEX™ SYSTEM

For installation under carpet tile

Updated
02.12.2021



CONNECTRAC.

A brand of **legrand**

HOW WE CAN HELP

Online

Build your own Flex raceway system using our innovative web tool on the Connectrac website!

Click around and play in this online experience while learning the basics of how Flex works.

connectrac.com/build-your-own

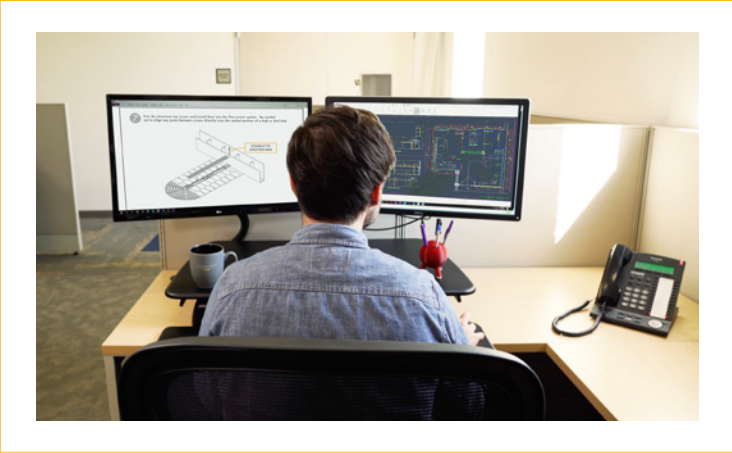


Design Team Services

Connectrac® believes in providing exceptional customer service by offering unique resources like our Design Team.

These industry specialists are available to help you specify the best Flex solution for your next project.

connectrac.com/design-services



General Info & Questions

Contact us any time! | [877.480.5637](tel:877.480.5637) | info@connectrac.com | connectrac.com

TABLE OF CONTENTS

What is Flex?	Pg 4
How it Works	Pg 6
Get Started	Pg 8
Flex Data Capacity	Pg 9

FLEX SYSTEM

For installation under carpet tile



HUDDLE

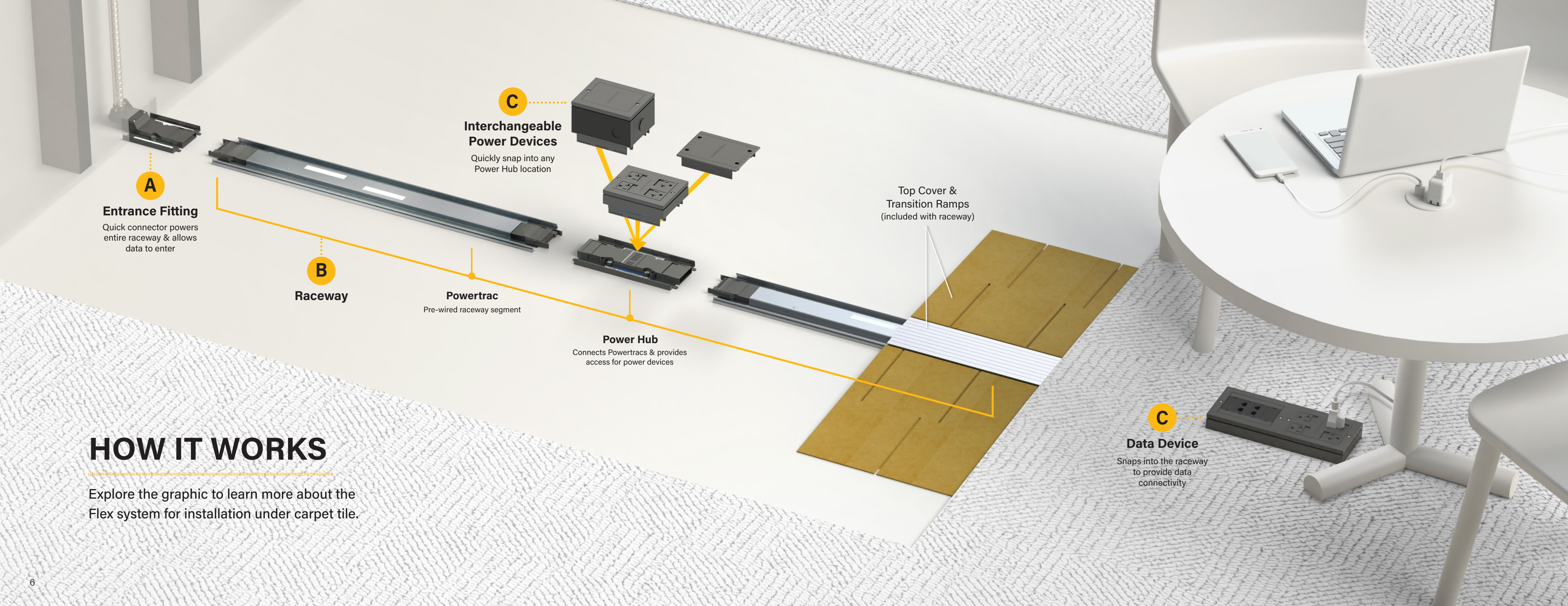
MEET

WORK

Connectrac® Flex is...

A floor-based power and data distribution system that allows users to quickly add connectivity or change power locations in a snap.

Any Space. Any Building. Any Time.™



A

Entrance Fitting
Quick connector powers entire raceway & allows data to enter

B

Raceway

Powertrac
Pre-wired raceway segment

C

Interchangeable Power Devices
Quickly snap into any Power Hub location

Power Hub
Connects Powertracs & provides access for power devices

Top Cover & Transition Ramps
(included with raceway)

C

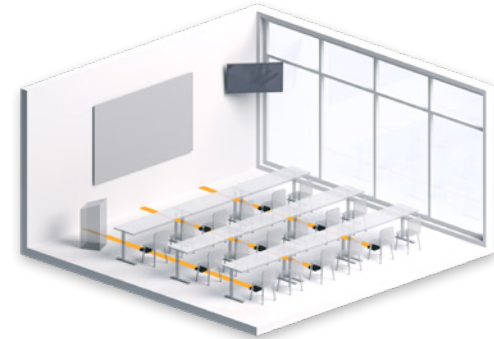
Data Device
Snaps into the raceway to provide data connectivity

HOW IT WORKS

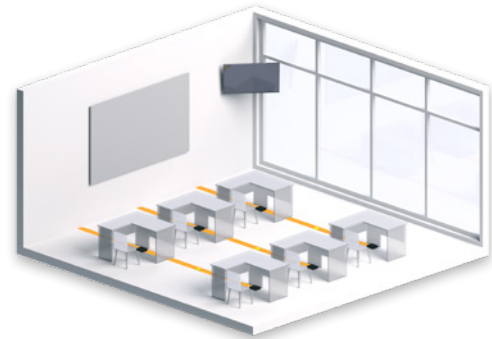
Explore the graphic to learn more about the Flex system for installation under carpet tile.

Plan Flex Raceway System

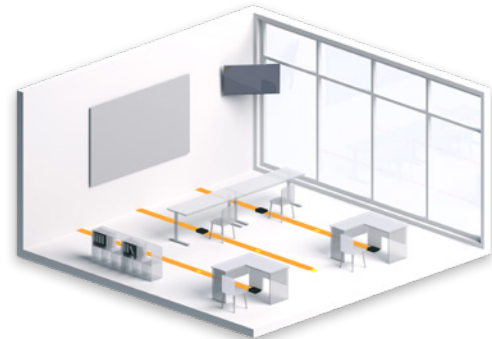
TIP: Visualize how your space might adapt and evolve over time.



What is the current use of this space?



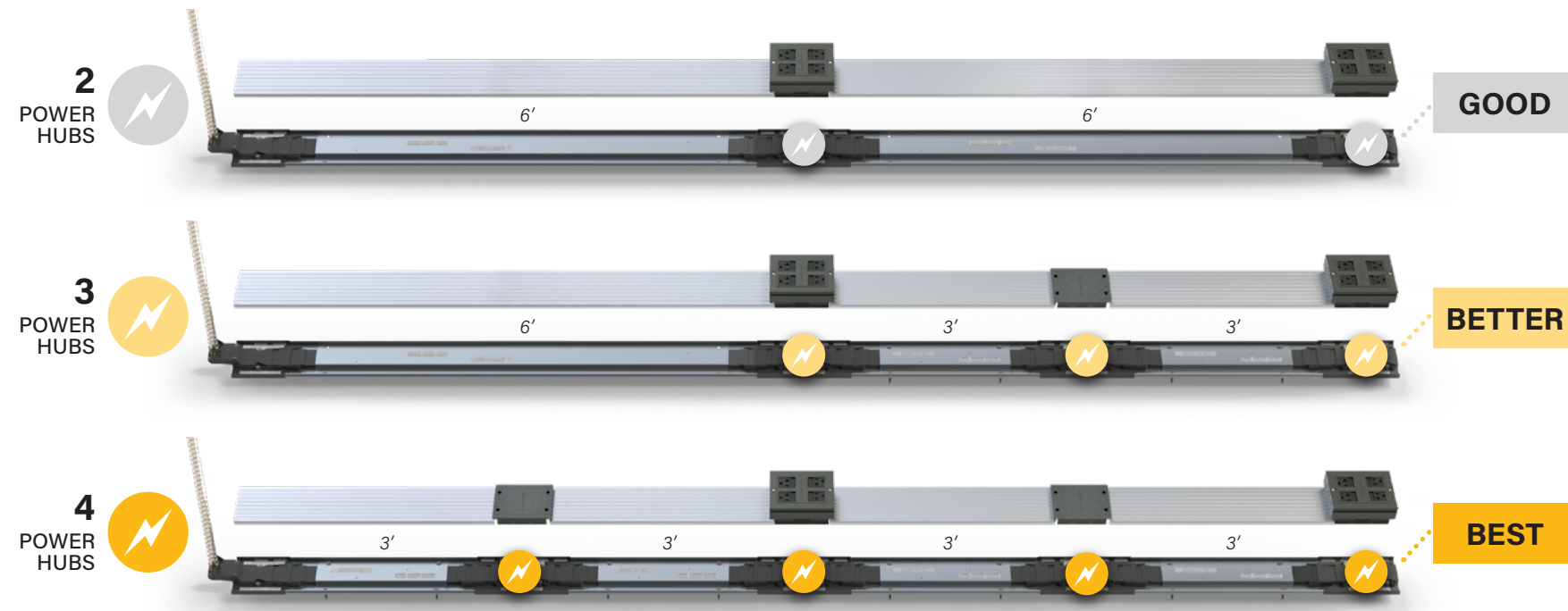
What else might it be used for in the future?



How might furniture be rearranged?

Optimize Your Raceway

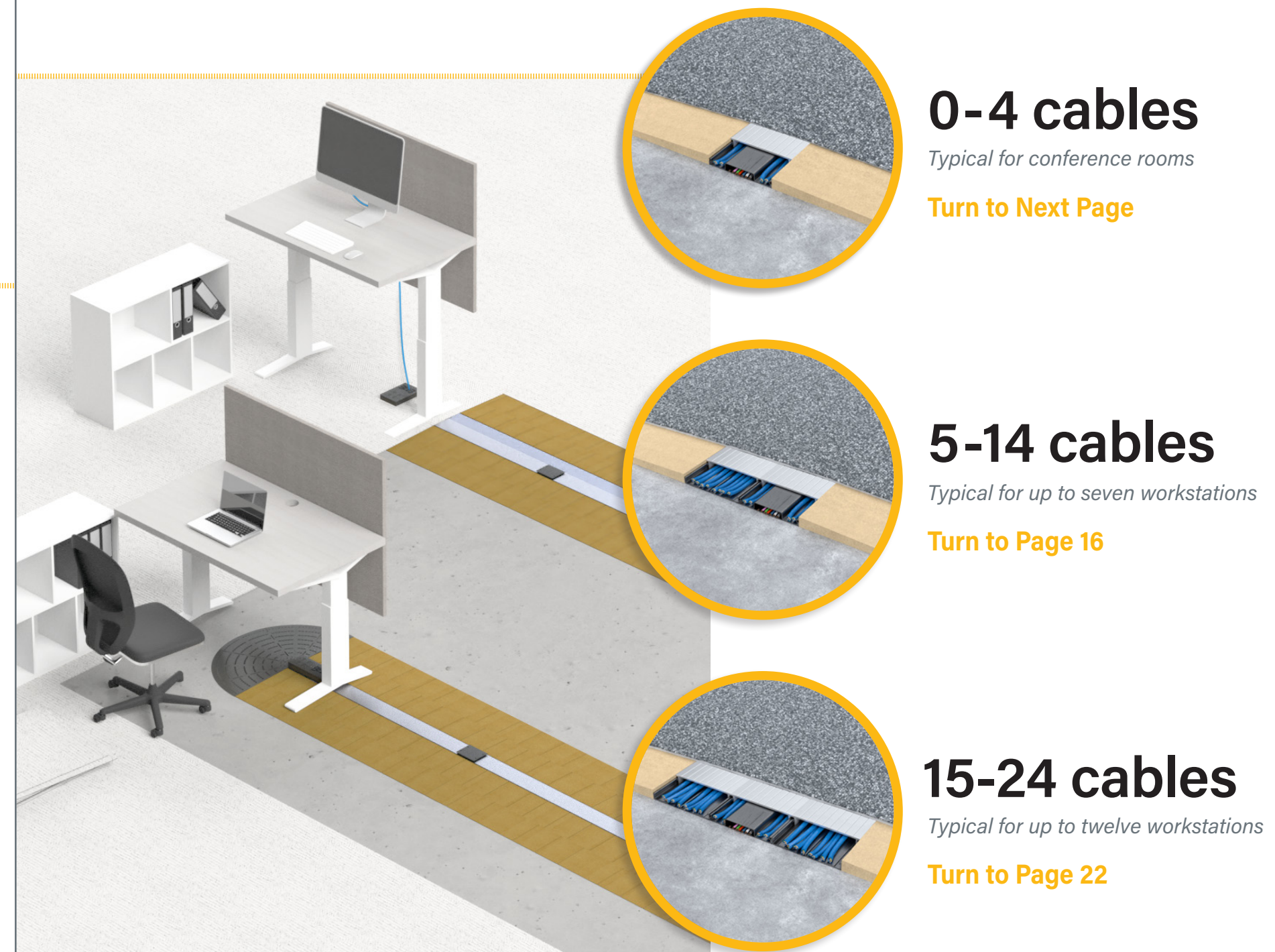
Increase your system's adaptability by adding more points of power access.



⚡ Power Hubs = access points for power devices

TIP: For greater flexibility at minimal cost, add more Power Hubs and connect shorter Powertracs.

How much data do you need?



0-4 cables

Typical for conference rooms

Turn to Next Page

5-14 cables

Typical for up to seven workstations

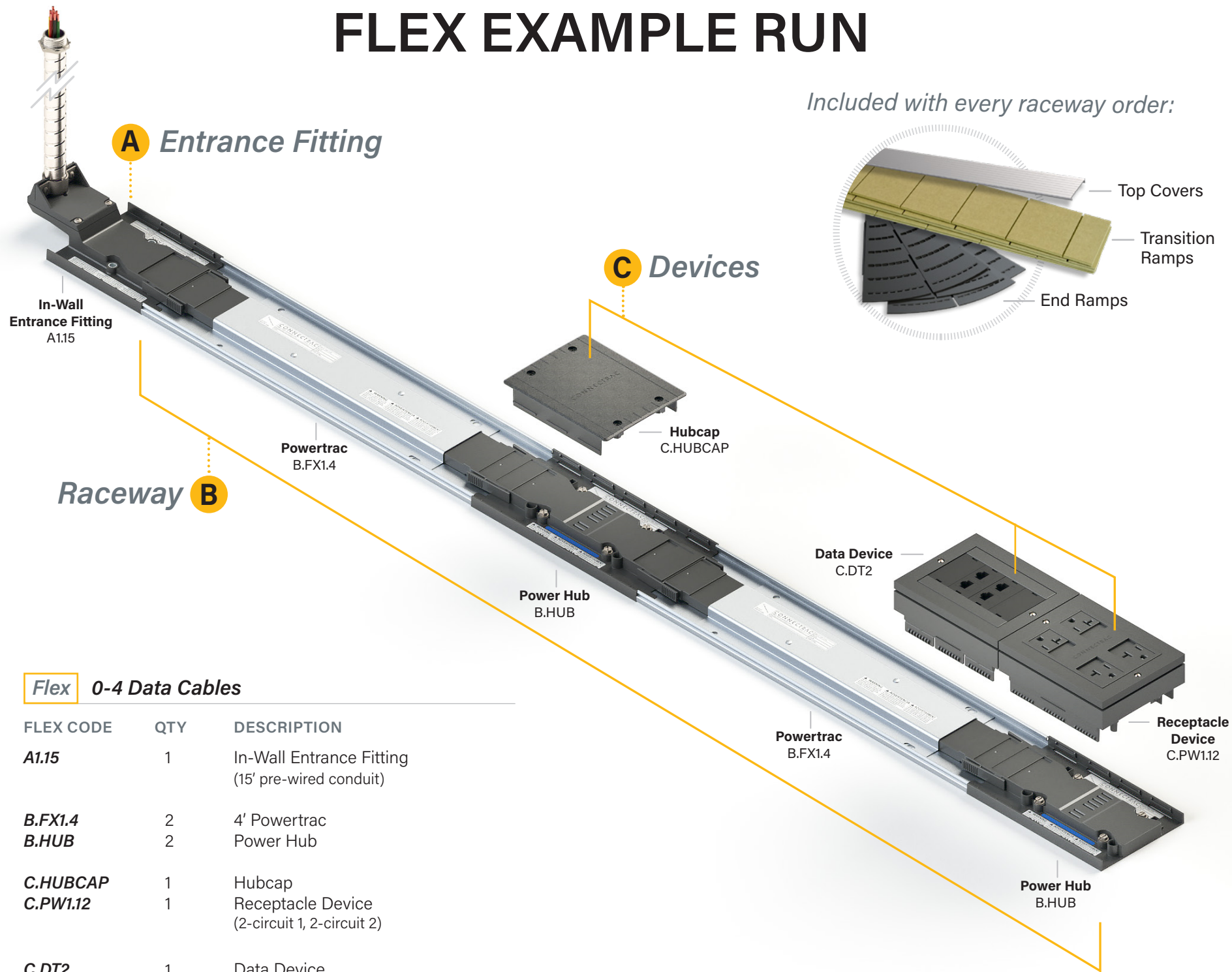
Turn to Page 16

15-24 cables

Typical for up to twelve workstations

Turn to Page 22

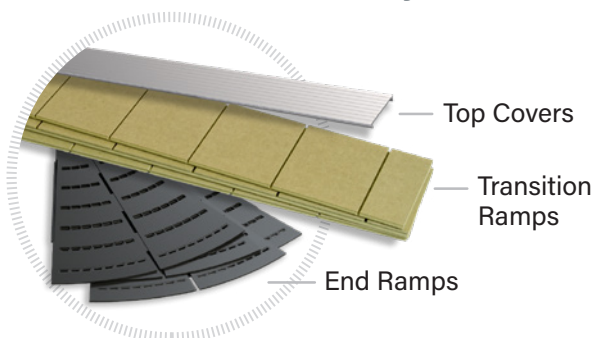
FLEX EXAMPLE RUN



Flex 0-4 Data Cables

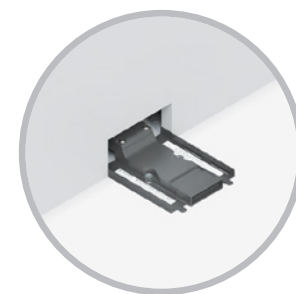
FLEX CODE	QTY	DESCRIPTION
A1.15	1	In-Wall Entrance Fitting (15' pre-wired conduit)
B.FX1.4	2	4' Powertrac
B.HUB	2	Power Hub
C.HUBCAP	1	Hubcap
C.PW1.12	1	Receptacle Device (2-circuit 1, 2-circuit 2)
C.DT2	1	Data Device

Included with every raceway order:

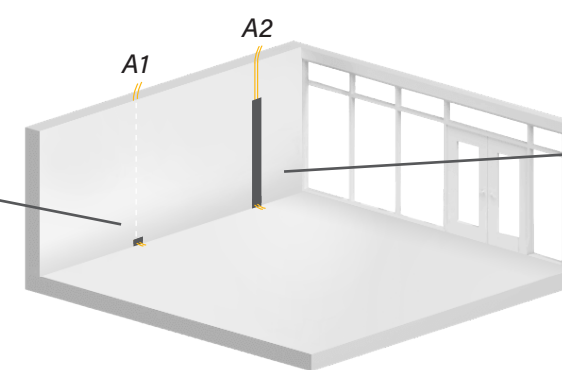


A Entrance Fitting

Choose how your Flex raceways start at the wall.



In-Wall Entrance Fitting

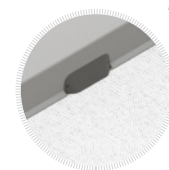


Surface-Mounted Entrance Fitting

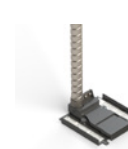
FLEX CODE	DESCRIPTION
A1.15	In-Wall Entrance Fitting Use when cabling is running <i>INSIDE</i> the wall: 15' pre-wired conduit
A1.30	30' pre-wired conduit



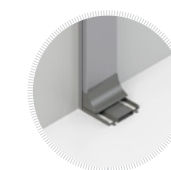
Base Trim included



FLEX CODE	DESCRIPTION
A2.3	Surface-Mounted Entrance Fitting Use when cabling is running <i>OUTSIDE</i> the wall: 3' pre-wired conduit, 2' Walltrac
A2.15	15' pre-wired conduit, 12' Walltrac
A2.30	30' pre-wired conduit, 12' Walltrac



Transition accessories included



TIP: Use A2.3 to connect to existing wall outlet boxes.

A



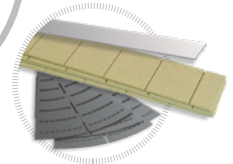
B Raceway

Continue to build your raceways by connecting Powertracs and Power Hubs.

Powertracs

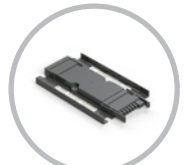


Powertrac



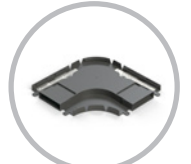
Top Covers & Ramps included

FLEX CODE	DESCRIPTION
B.FX1.____	Powertrac Pre-wired raceway segments available in standard lengths:
B.FX1.2	2' Powertrac
B.FX1.3	3' Powertrac
B.FX1.4	4' Powertrac
B.FX1.5	5' Powertrac
B.FX1.6	6' Powertrac



Powertrac Extender

B.FX1.EXT **Powertrac Extender**
Adds 6" to any of our standard Powertrac lengths

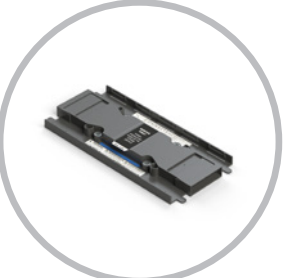


Powertrac Corner

B.FX1.90 **Powertrac Corner**
Allows raceway to make a 90° turn

Power Hub

FLEX CODE	DESCRIPTION
B.HUB	Power Hub Connects Powertracs & provides access for power devices



Power Hub

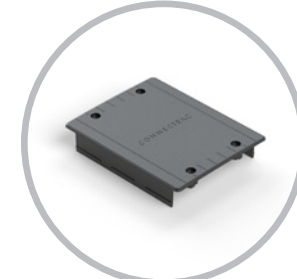
TIP: For greater flexibility at minimal cost, add more Power Hubs and connect shorter Powertracs.

C Devices

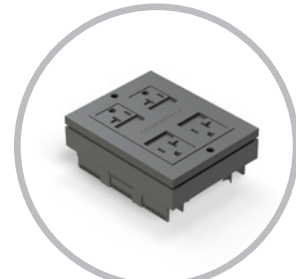
Equip your Flex raceway system with power & data devices.

Power Devices

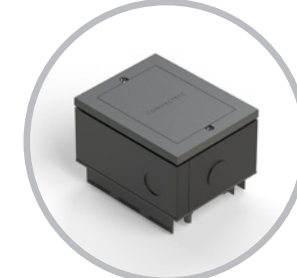
Choose which devices (if any) you want to snap into your Power Hubs.



Hubcap



Receptacle Device



Hardwire Device

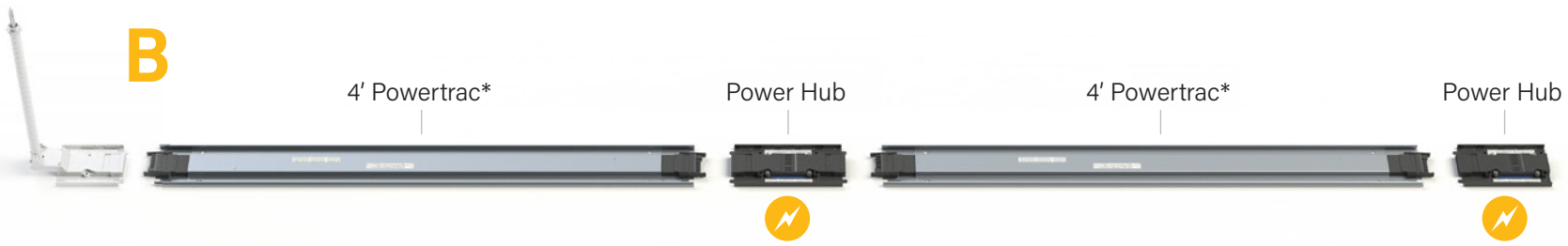
Power devices are all interchangeable and can be hot-swapped when desired.

FLEX CODE	DESCRIPTION
C.HUBCAP	Hubcap Creates a walkable surface and makes power easily accessible for future needs

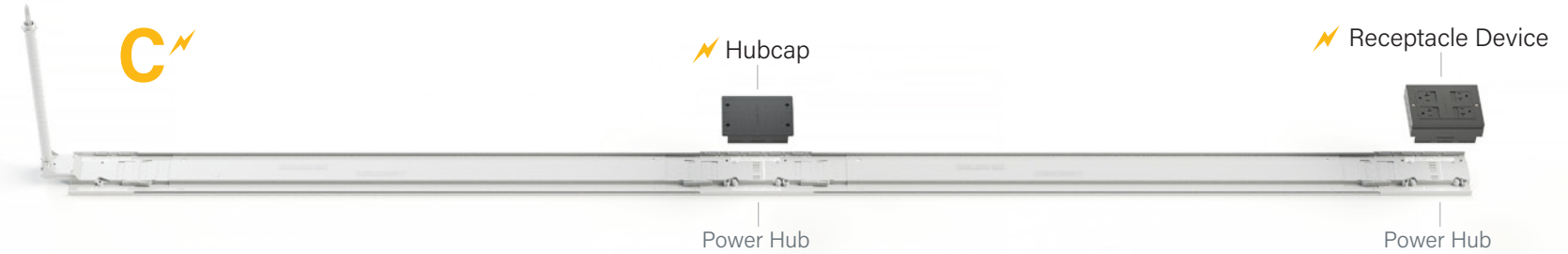
FLEX CODE	DESCRIPTION
C.PW1.____	Receptacle Device Quad device available in various 4-circuit options:
C.PW1.11	All circuit 1
C.PW1.22	All circuit 2
C.PW1.33	All circuit 3
C.PW1.44	All circuit 4
C.PW1.12*	2-circuit 1, 2-circuit 2
C.PW1.34*	2-circuit 3, 2-circuit 4
C.PW1.14*	2-circuit 1, 2-circuit 4

**Controlled devices available (see Technical Guide for more details)*

FLEX CODE	DESCRIPTION
C.PW2.4	Hardwire Device 4-circuit monument that connects to most furniture base feeds



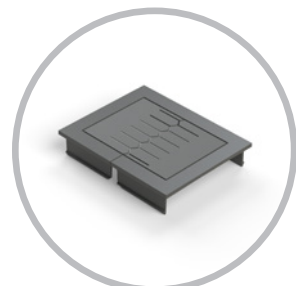
*Powertrac measurements are based on the on-center distance between the Entrance Fitting and/or Power Hubs.



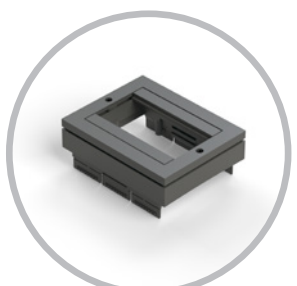
C Devices

Equip your Flex raceway system with power & data devices.

Data Devices These devices go anywhere on the raceway.



Grommet



Data Device

Data devices easily snap next to any power device.

FLEX CODE	DESCRIPTION
C.DT1	Grommet Allows cables to enter/exit raceway
C.DT2	Data Device Fits up to 8 low-voltage keystone modules



C

Data Device

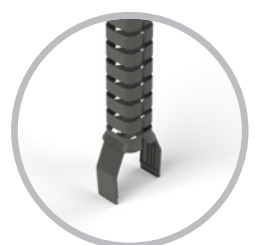
Optional Accessories

Enhance your raceways with these additional options.

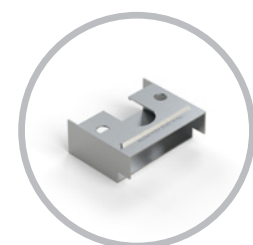


Accessories

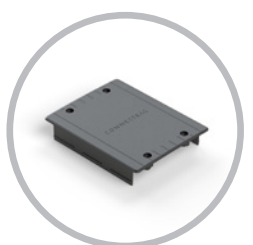
FLEX CODE	DESCRIPTION
VWM	Vertical Wire Manager Attaches to any power or data device to manage cabling
RIF	Rough-In Frame Installed before drywall to provide a rough opening for cabling
C.HUBCAP	Extra Hubcap Creates a walkable surface and makes power easily accessible for future needs



Vertical Wire Manager



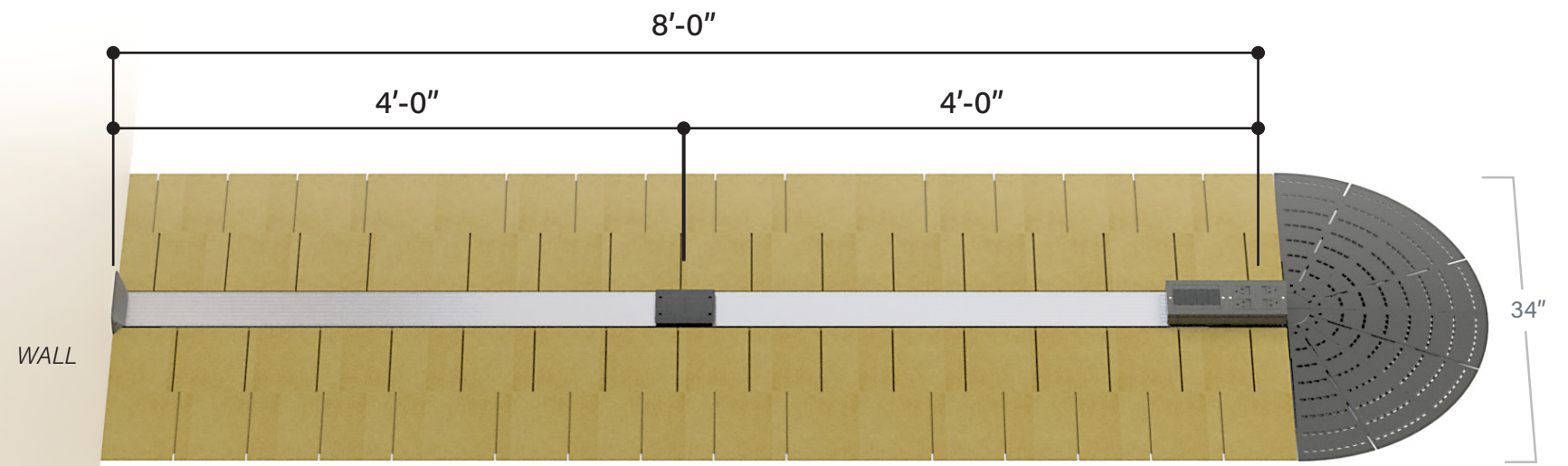
Rough-In Frame



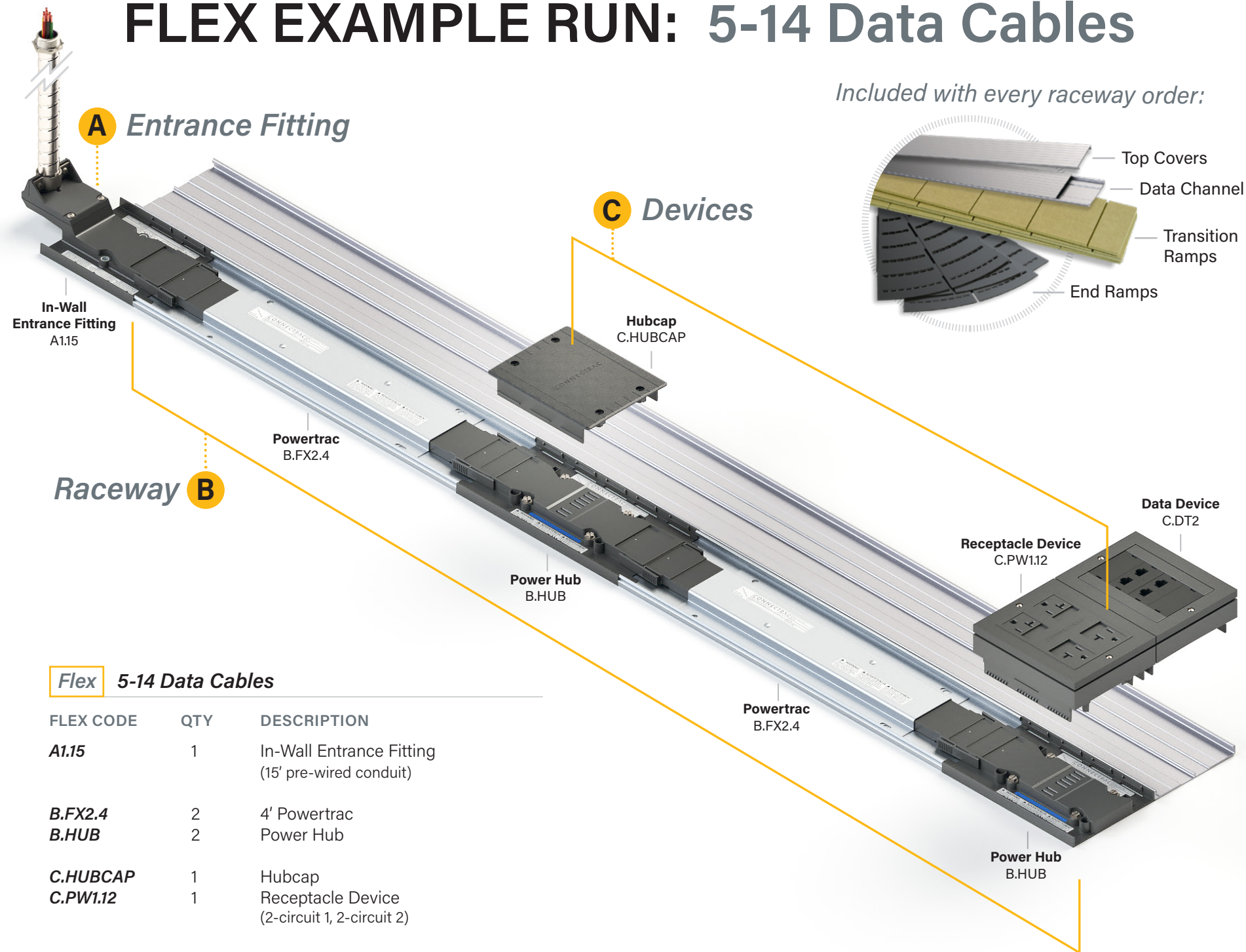
Extra Hubcap

Complete Raceway

Shown with Top Covers, Transition Ramps, and End Ramps installed.



FLEX EXAMPLE RUN: 5-14 Data Cables

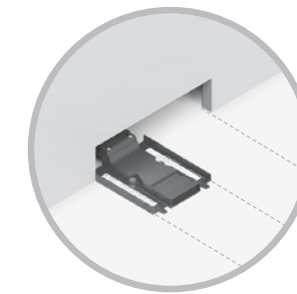


Flex 5-14 Data Cables

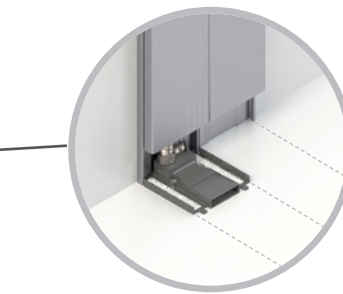
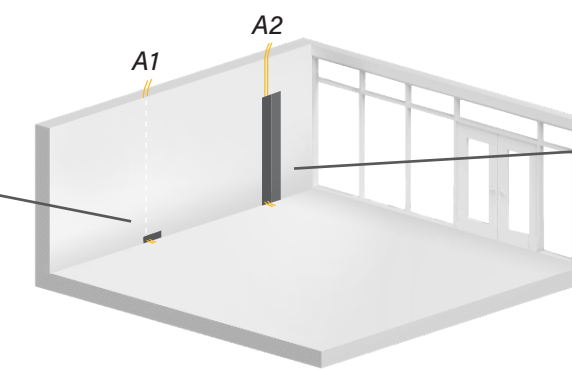
FLEX CODE	QTY	DESCRIPTION
A1.15	1	In-Wall Entrance Fitting (15' pre-wired conduit)
B.FX2.4	2	4' Powertrac
B.HUB	2	Power Hub
C.HUBCAP	1	Hubcap
C.PW1.12	1	Receptacle Device (2-circuit 1, 2-circuit 2)
C.DT2	1	Data Device

A Entrance Fitting

Choose how your Flex raceways start at the wall.

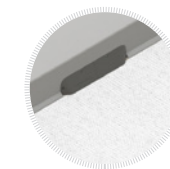


In-Wall Entrance Fitting



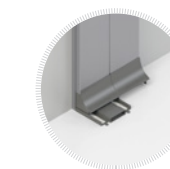
Surface-Mounted Entrance Fitting

FLEX CODE	DESCRIPTION
A1.15	In-Wall Entrance Fitting Use when cabling is running <i>INSIDE</i> the wall: 15' pre-wired conduit
A1.30	30' pre-wired conduit



Base Trim included

FLEX CODE	DESCRIPTION
A2.3	Surface-Mounted Entrance Fitting Use when cabling is running <i>OUTSIDE</i> the wall: 3' pre-wired conduit, 2' Walltrac
A2.15	15' pre-wired conduit, 12' Walltrac
A2.30	30' pre-wired conduit, 12' Walltrac



Transition accessories included

TIP: Use A2.3 to connect to existing wall outlet boxes.

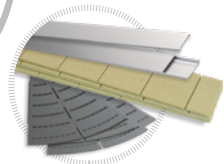


B Raceway Continue to build your raceways by connecting Powertracs and Power Hubs.

Powertracs

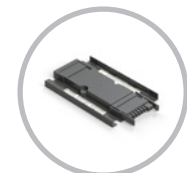


Powertrac



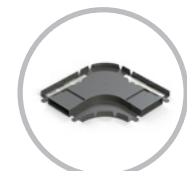
Top Covers, Data Channel & Ramps included

FLEX CODE	DESCRIPTION
B.FX2. __	Powertrac <i>Pre-wired raceway segments available in standard lengths:</i>
B.FX2.2	2' Powertrac
B.FX2.3	3' Powertrac
B.FX2.4	4' Powertrac
B.FX2.5	5' Powertrac
B.FX2.6	6' Powertrac



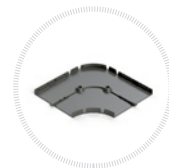
Powertrac Extender

B.FX2.EXT	Powertrac Extender <i>Adds 6" to any of our standard Powertrac lengths</i>
------------------	--



Powertrac Corner

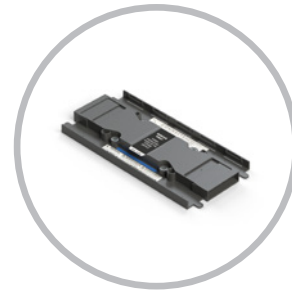
B.FX2.90	Powertrac Corner <i>Allows raceway to make a 90° turn</i>
-----------------	---



Datatrac Corner included

Power Hub

FLEX CODE	DESCRIPTION
B.HUB	Power Hub <i>Connects Powertracs & provides access for power devices</i>



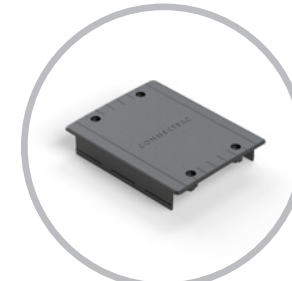
Power Hub

TIP: For greater flexibility at minimal cost, add more Power Hubs and connect shorter Powertracs.

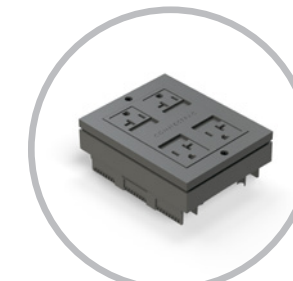
C Devices Equip your Flex raceway system with power & data devices.

Power Devices

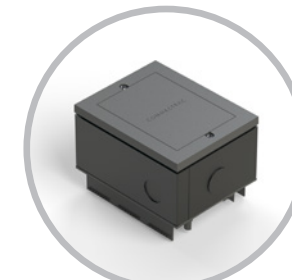
Choose which devices (if any) you want to snap into your Power Hubs.



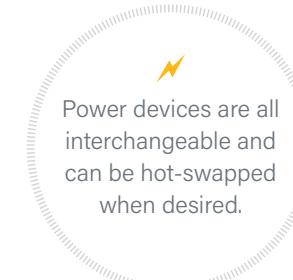
Hubcap



Receptacle Device



Hardwire Device



Power devices are all interchangeable and can be hot-swapped when desired.

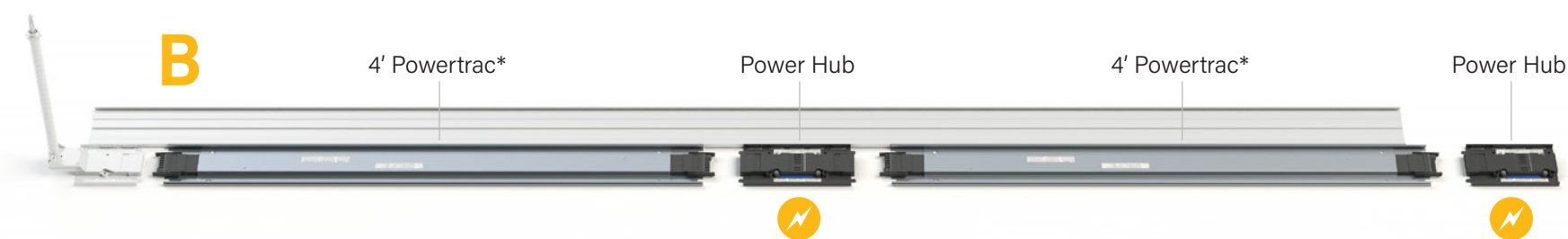
FLEX CODE	DESCRIPTION
C.HUBCAP	Hubcap <i>Creates a walkable surface and makes power easily accessible for future needs</i>

C.PW1. __	Receptacle Device <i>Quad device available in various 4-circuit options:</i>
------------------	--

C.PW1.11	All circuit 1
C.PW1.22	All circuit 2
C.PW1.33	All circuit 3
C.PW1.44	All circuit 4
C.PW1.12*	2-circuit 1, 2-circuit 2
C.PW1.34*	2-circuit 3, 2-circuit 4
C.PW1.14*	2-circuit 1, 2-circuit 4

**Controlled devices available (see Technical Guide for more details)*

C.PW2.4	Hardwire Device <i>4-circuit monument that connects to most furniture base feeds</i>
----------------	--



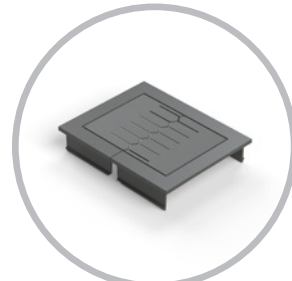
**Powertrac measurements are based on the on-center distance between the Entrance Fitting and/or Power Hubs.*



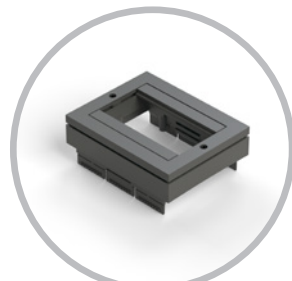
C Devices

Equip your Flex raceway system with power & data devices.

Data Devices These devices go anywhere on the raceway.



Grommet



Data Device

Data devices easily snap next to any power device.

FLEX CODE	DESCRIPTION
C.DT1	Grommet Allows cables to enter/exit raceway
C.DT2	Data Device Fits up to 8 low-voltage keystone modules



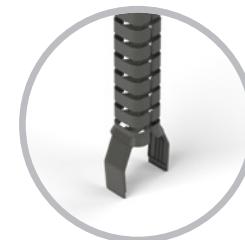
Optional Accessories

Enhance your raceways with these additional options.

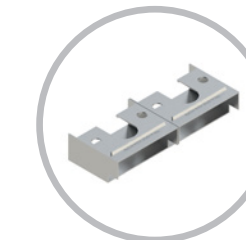


Accessories

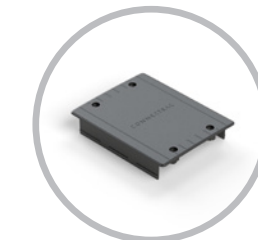
FLEX CODE	DESCRIPTION
VWM	Vertical Wire Manager Attaches to any power or data device to manage cabling
RIF	Rough-In Frame Installed before drywall to provide a rough opening for cabling
C.HUBCAP	Extra Hubcap Creates a walkable surface and makes power easily accessible for future needs



Vertical Wire Manager



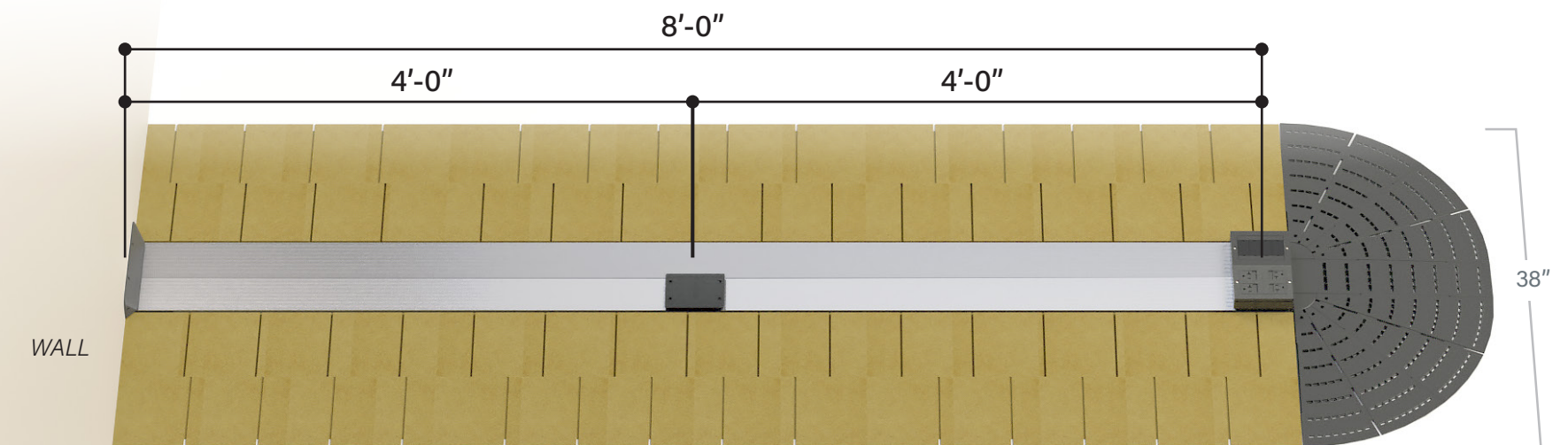
Rough-In Frame



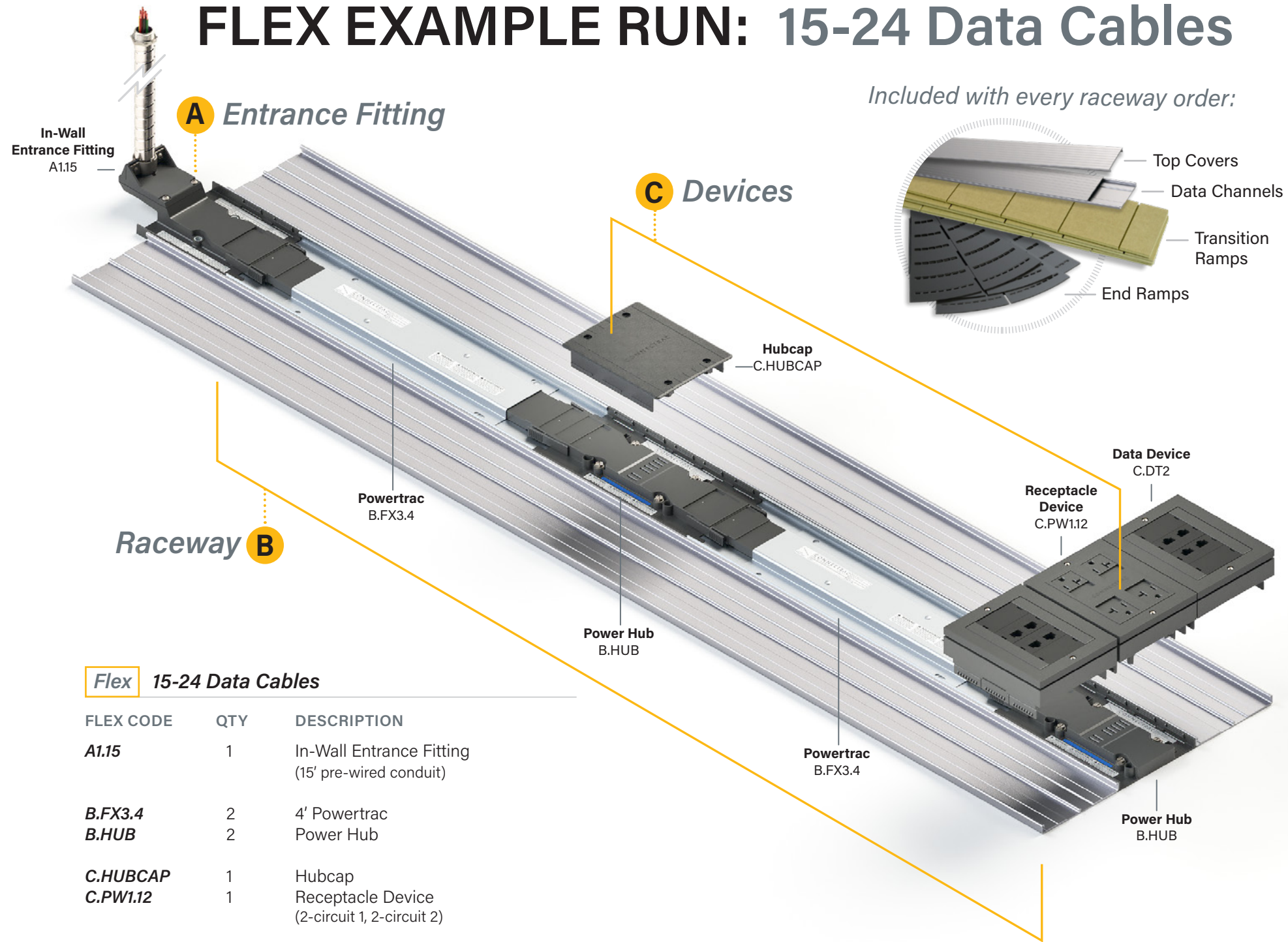
Extra Hubcap

Complete Raceway

Shown with Top Covers, Transition Ramps, and End Ramps installed.



FLEX EXAMPLE RUN: 15-24 Data Cables

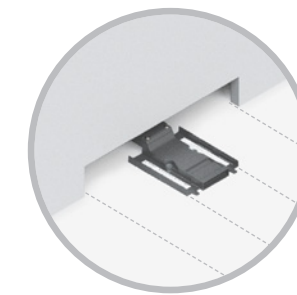


Flex 15-24 Data Cables

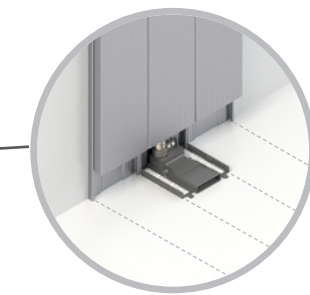
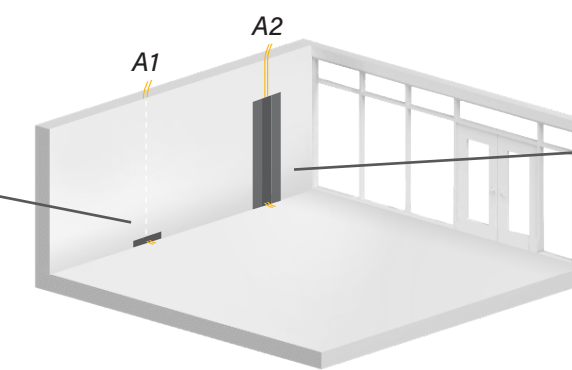
FLEX CODE	QTY	DESCRIPTION
A1.15	1	In-Wall Entrance Fitting (15' pre-wired conduit)
B.FX3.4	2	4' Powertrac
B.HUB	2	Power Hub
C.HUBCAP	1	Hubcap
C.PW1.12	1	Receptacle Device (2-circuit 1, 2-circuit 2)
C.DT2	2	Data Device

A Entrance Fitting

Choose how your Flex raceways start at the wall.

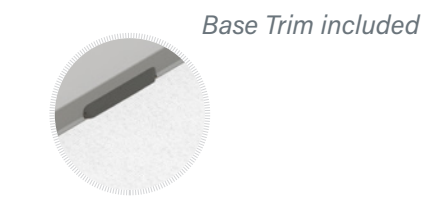


In-Wall Entrance Fitting



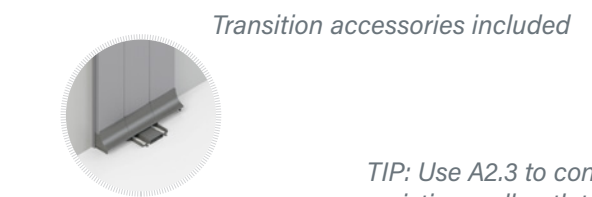
Surface-Mounted Entrance Fitting

FLEX CODE	DESCRIPTION
A1.15	In-Wall Entrance Fitting (15' pre-wired conduit)
A1.30	In-Wall Entrance Fitting (30' pre-wired conduit)



Base Trim included

FLEX CODE	DESCRIPTION
A2.3	Surface-Mounted Entrance Fitting (3' pre-wired conduit, 2' Walltrac)
A2.15	Surface-Mounted Entrance Fitting (15' pre-wired conduit, 12' Walltrac)
A2.30	Surface-Mounted Entrance Fitting (30' pre-wired conduit, 12' Walltrac)



Transition accessories included

TIP: Use A2.3 to connect to existing wall outlet boxes.

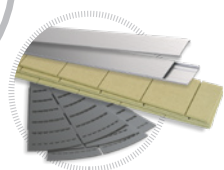


B Raceway Continue to build your raceways by connecting Powertracs and Power Hubs.

Powertracs

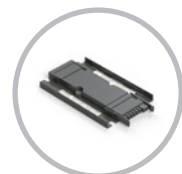


Powertrac



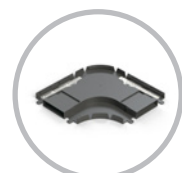
Top Covers, Data Channels & Ramps included

FLEX CODE	DESCRIPTION
B.FX3. __	Powertrac <i>Pre-wired raceway segments available in standard lengths:</i>
B.FX3.2	2' Powertrac
B.FX3.3	3' Powertrac
B.FX3.4	4' Powertrac
B.FX3.5	5' Powertrac
B.FX3.6	6' Powertrac



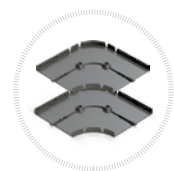
Powertrac Extender

B.FX3.EXT	Powertrac Extender <i>Adds 6" to any of our standard Powertrac lengths</i>
------------------	--



Powertrac Corner

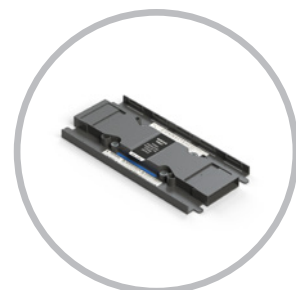
B.FX3.90	Powertrac Corner <i>Allows raceway to make a 90° turn</i>
-----------------	---



Datatrac Corners included

Power Hub

FLEX CODE	DESCRIPTION
B.HUB	Power Hub <i>Connects Powertracs & provides access for power devices</i>



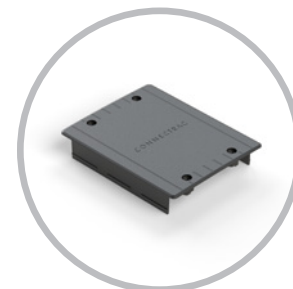
Power Hub

TIP: For greater flexibility at minimal cost, add more Power Hubs and connect shorter Powertracs.

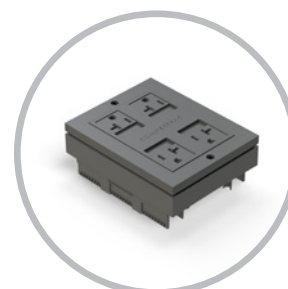
C Devices Equip your Flex raceway system with power & data devices.

Power Devices

Choose which devices (if any) you want to snap into your Power Hubs.



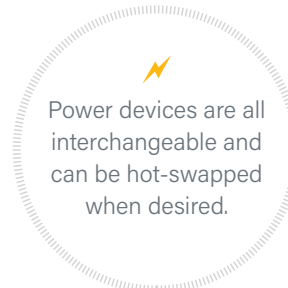
Hubcap



Receptacle Device



Hardwire Device



Power devices are all interchangeable and can be hot-swapped when desired.

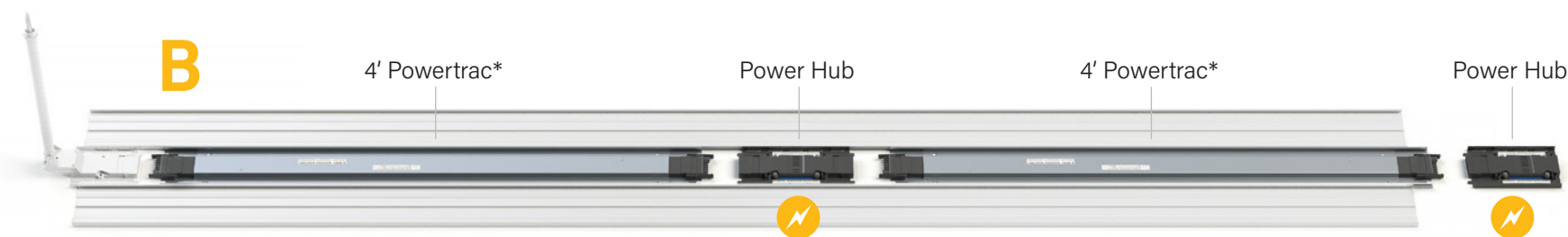
FLEX CODE	DESCRIPTION
C.HUBCAP	Hubcap <i>Creates a walkable surface and makes power easily accessible for future needs</i>

C.PW1. __	Receptacle Device <i>Quad device available in various 4-circuit options:</i>
------------------	--

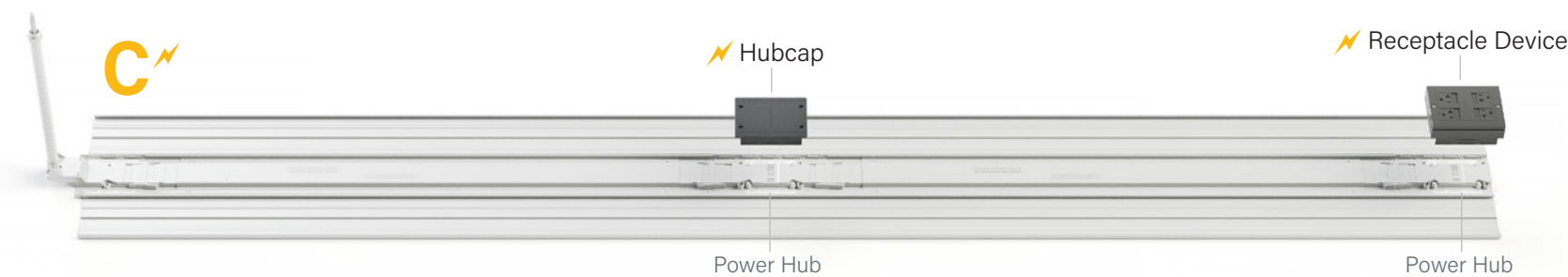
C.PW1.11	All circuit 1
C.PW1.22	All circuit 2
C.PW1.33	All circuit 3
C.PW1.44	All circuit 4
C.PW1.12*	2-circuit 1, 2-circuit 2
C.PW1.34*	2-circuit 3, 2-circuit 4
C.PW1.14*	2-circuit 1, 2-circuit 4

**Controlled devices available (see Technical Guide for more details)*

C.PW2.4	Hardwire Device <i>4-circuit monument that connects to most furniture base feeds</i>
----------------	--



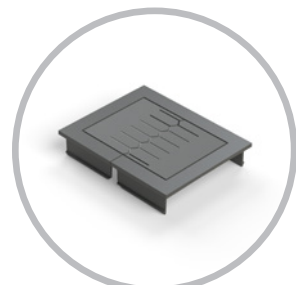
**Powertrac measurements are based on the on-center distance between the Entrance Fitting and/or Power Hubs.*



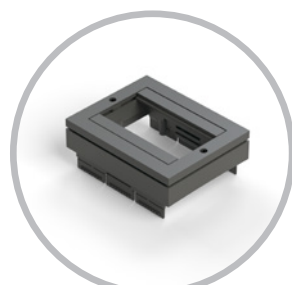
C Devices

Equip your Flex raceway system with power & data devices.

Data Devices These devices go anywhere on the raceway.



Grommet



Data Device

Data devices easily snap next to any power device.

FLEX CODE	DESCRIPTION
C.DT1	Grommet <i>Allows cables to enter/exit raceway</i>
C.DT2	Data Device <i>Fits up to 8 low-voltage keystone modules</i>



Optional Accessories

Enhance your raceways with these additional options.

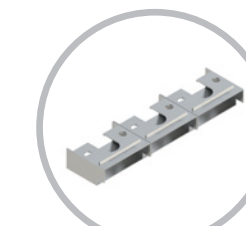


Accessories

FLEX CODE	DESCRIPTION
VWM	Vertical Wire Manager <i>Attaches to any power or data device to manage cabling</i>
RIF	Rough-In Frame <i>Installed before drywall to provide a rough opening for cabling</i>
C.HUBCAP	Extra Hubcap <i>Creates a walkable surface and makes power easily accessible for future needs</i>



Vertical Wire Manager



Rough-In Frame



Extra Hubcap

Complete Raceway

Shown with Top Covers, Transition Ramps, and End Ramps installed.

